

# FOREST LOOKOUTS

OREGON

BAKER COUNTY

BENTON COUNTY

CLACKAMAS COUNTY

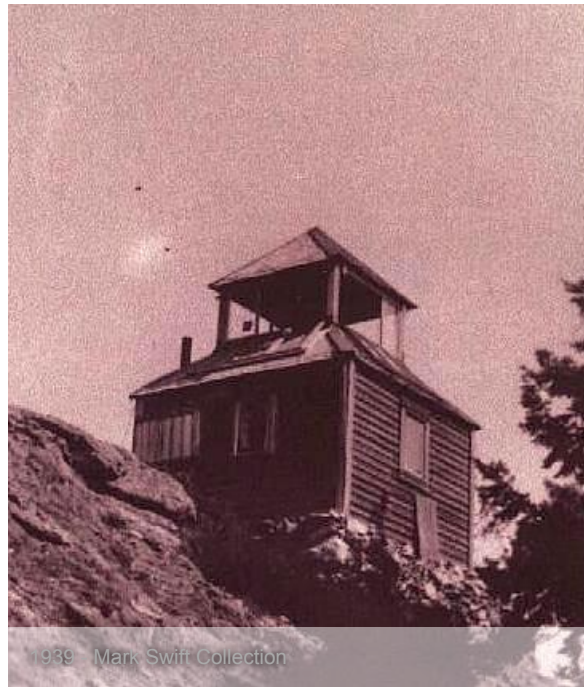
CLATSOP COUNTY

MORE...

LINN COUNTY

## *YELLOWSTONE MOUNTAIN*

Linn County Fire Patrol  
11S-3E-32



1939 - Mark Swift Collection



**April 15, 1913:** "Another line from Crawfordsville up the middle fork of the Santiam river to Yellowstone, with John Roberts, of Crawfordsville, in charge of the lookout station at that point." (**Albany Democrat**)

**May 14, 1925:** "Included in new facilities are a newly established lookout on Yellowstone mountain." (**Albany Democrat**)

**August 31, 1926:** "Lester Morehead and Earnest Rolcoln commenced working Saturday at Yellowstone Lookout, where they are erecting a new lookout for the coming season." (**Albany Democrat-Herald**)

**August 13, 1931:** "Mr. Whitcomb, the lookout at Yellowstone, and his wife moved down the mountain about three miles Sunday on account of the fire which is within two miles of the station. With changed conditions they were able to move back the next day." (**The New Era**)

**August 20, 1935:** "Mrs. Clarence Jacobson, who has been visiting relatives in Sweet Home for a few days, left Monday morning for Yellowstone Lookout where she will spend the summer with her husband." (**Albany Democrat-Herald**)

**August 1, 1940:** "Mr. and Mrs. Ray Cather left last week for the fire station at Yellowstone where Mr. Cather will be lookout." (**The Lebanon Express**)

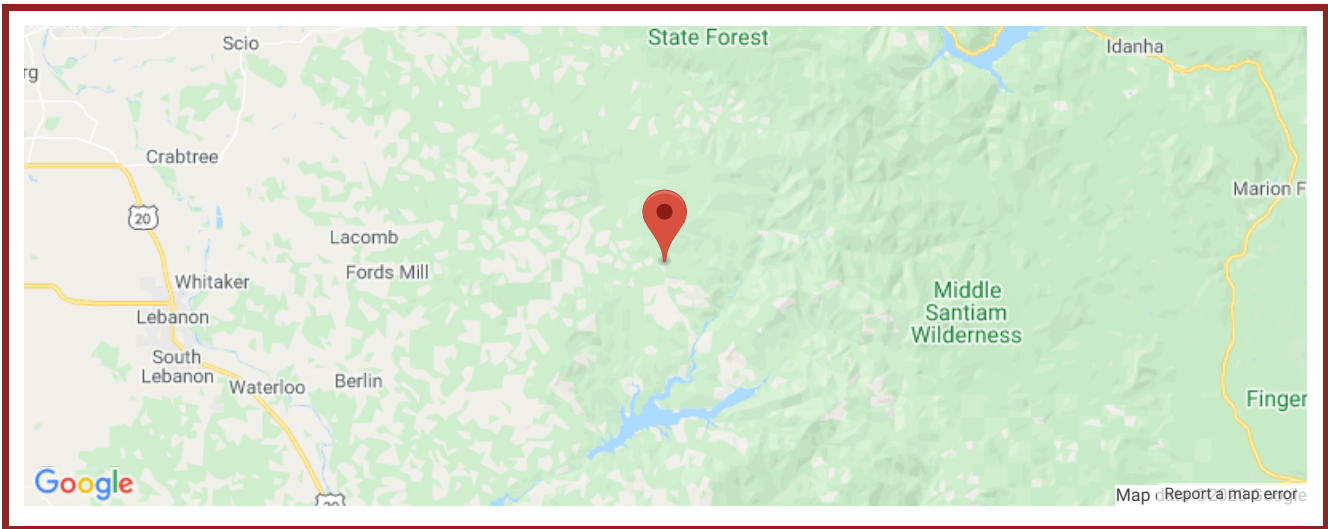
**July 17, 1941:** "Ray Cather, who is at the Lookout on Yellowstone peak, reports the temperature Sunday was 84 degrees while here in the McDowell creek valley it reached 103 degrees and everyone in swimming or wishing they were." (**The Lebanon Express**)

**September 18, 1941:** "Roy Cather, who has been stationed at the lookout on Yellowstone peak, spent the weekend with his sister, Mrs. Fred Gaylord, while waiting for the weather to clear up enough to permit the moving of his camping outfit." (**The Lebanon Express**)

**July 8, 1943:** "Byron Gift, Sr., is the lookout at Yellowstone lookout station." (**The New Era**)



**1970:** The lookout was removed.



REX'S FIRE LOOKOUT PAGE



MEMBER: FOREST FIRE LOOKOUT ASSOCIATION

