

# NATIONAL REGISTER BULLETIN

Technical information on the the National Register of Historic Places:  
survey, evaluation, registration, and preservation of cultural resources

U.S. Department of the Interior  
National Park Service  
Cultural Resources  

---

National Register, History and Education

## How to Apply the National Register Criteria for Evaluation

The mission of the Department of the Interior is to protect and provide access to our Nation's natural and cultural heritage and honor our trust responsibilities to tribes.

The National Park Service preserves unimpaired the natural and cultural resources and values of the National Park System for the enjoyment, education, and inspiration of this and future generations. The Park Service cooperates with partners to extend the benefits of natural and cultural resource conservation and outdoor recreation throughout this country and the world.

This material is partially based upon work conducted under a cooperative agreement with the National Conference of State Historic Preservation Officers and the U.S. Department of the Interior.

Date of publication: 1990; revised 1991, 1995, 1997. Revised for Internet 1995.

*Cover*

*(Top Left) Criterion B - Frederick Douglass Home, Washington, D.C. From 1877-1899, this was the home of Frederick Douglass, the former slave who rose to become a prominent author, abolitionist, editor, orator, and diplomat. (Walter Smalling, Jr.)*

*(Top Right) Criterion D - Francis Canyon Ruin, Blanco vicinity, Rio Arriba County, New Mexico. A fortified village site composed of 40 masonry-walled rooms arranged in a cluster of four house blocks. Constructed ca. 1716-1742 for protection against raiding Utes and Comanches, the site has information potential related to Navajo, Pueblo, and Spanish cultures. (Jon Samuelson)*

*(Bottom Left) Criterion C - Bridge in Cherrytree Township, Venago County, Pennsylvania. Built in 1882, this Pratt through truss bridge is significant for engineering as a well preserved example of a type of bridge frequently used in northwestern Pennsylvania in the late 19th century. (Pennsylvania Department of Transportation)*

*(Bottom Right) Criterion A - Main Street/Market Square Historic District, Houston, Harris County, Texas. Until well into the 20th century this district marked the bounds of public and business life in Houston. Constructed between the 1870s and 1920s, the district includes Houston's municipal and county buildings, and served as the city's wholesale, retail, and financial center. (Paul Hester)*

---

# PREFACE

---

Preserving historic properties as important reflections of our American heritage became a national policy through passage of the Antiquities Act of 1906, the Historic Sites Act of 1935, and the National Historic Preservation Act of 1966, as amended. The Historic Sites Act authorized the Secretary of the Interior to identify and recognize properties of national significance (National Historic Landmarks) in United States history and archeology. The National Historic Preservation Act of 1966 authorized the Secretary to expand this recognition to properties of local and State significance in American history, architecture, archeology, engineering, and culture, and worthy of preservation. The National Register of Historic Places is the official list of these recognized properties, and is maintained and expanded by the National Park Service on behalf of the Secretary of the Interior.<sup>1</sup>

The National Register of Historic Places documents the appearance and importance of districts, sites, buildings, structures, and objects signifi-

cant in our prehistory and history. These properties represent the major patterns of our shared local, State, and national experience. To guide the selection of properties included in the National Register, the National Park Service has developed the National Register Criteria for Evaluation. These criteria are standards by which every property that is nominated to the National Register is judged. In addition, the National Park Service has developed criteria for the recognition of nationally significant properties, which are designated National Historic Landmarks and prehistoric and historic units of the National Park System. Both these sets of criteria were developed to be consistent with the Secretary of the Interior's *Standards and Guidelines for Archeology and Historic Preservation*, which are uniform, national standards for preservation activities.<sup>2</sup>

This publication explains how the National Park Service applies these criteria in evaluating the wide range of properties that may be significant in local, State, and national history.

It should be used by anyone who must decide if a particular property qualifies for the National Register of Historic Places.

Listing properties in the National Register is an important step in a nationwide preservation process. The responsibility for the identification, initial evaluation, nomination, and treatment of historic resources lies with private individuals, State historic preservation offices, and Federal preservation offices, local governments, and Indian tribes. The final evaluation and listing of properties in the National Register is the responsibility of the Keeper of the National Register.

This bulletin was prepared by staff of the National Register Branch, Interagency Resources Division, National Park Service, with the assistance of the History Division. It was originally issued in draft form in 1982. The draft was revised into final form by Patrick W. Andrus, Historian, National Register, and edited by Rebecca H. Shrimpton, Consulting Historian.

Beth L. Savage, National Register and Sarah Dillard Pope, National Register, NCSHPO coordinated the latest revision of this bulletin. Antionette J. Lee, Tanya Gossett, and Kira Badamo coordinated earlier revisions.

---

<sup>1</sup>Properties listed in the National Register receive limited Federal protection and certain benefits. For more information concerning the effects of listing, and how the National Register may be used by the general public and Certified Local Governments, as well as by local, State, and Federal agencies, and for copies of National Register Bulletins, contact the National Park Service, National Register, 1849 C Street, NW, NC400, Washington, D.C., 20240. Information may also be obtained by visiting the National Register Web site at [www.cr.nps.gov/nr](http://www.cr.nps.gov/nr) or by contacting any of the historic preservation offices in the States and territories.

<sup>2</sup>The *Secretary of the Interior's Standards and Guidelines for Archeology and Historic Preservation* are found in the *Federal Register*, Vol. 48, No. 190 (Thursday, September 29, 1983). A copy can be obtained by writing the National Park Service, Heritage Preservation Services (at the address above).

---

# TABLE OF CONTENTS

---

Preface .....	i
I. Introduction .....	1
II. National Register Criteria for Evaluation .....	2
III. How to Use this Bulletin to Evaluate a Property .....	3
IV. How to Define Categories of Historic Properties .....	4
Building .....	4
Structure .....	4
Object .....	5
Site .....	5
District .....	5
Concentration, Linkage, & Continuity of Features .....	5
Significance .....	5
Types of Features .....	5
Geographical Boundaries .....	6
Discontiguous Districts .....	6
V. How to Evaluate a Property Within its Historic Context .....	7
Understanding Historic Contexts .....	7
How to Evaluate a Property Within Its Historic Context .....	7
Properties Significant Within More Than on Historic Context .....	9
Comparing Related Properties .....	9
Local, State, and National Historic Contexts .....	9
VI. How to Identify the Type of Significance of a Property .....	11
Introduction .....	11
Criterion A: Event .....	12
Understanding Criterion A .....	12
Applying Criterion A .....	12
Types of Events .....	12
Association of the Property with the Events .....	12
Significance of the Association .....	12
Traditional Cultural Values .....	13
Criterion B: Person .....	14
Understanding Criterion B .....	14
Applying Criterion B .....	15
Significance of the Individual .....	15
Association with the Property .....	15
Comparison to Related Properties .....	15
Association with Groups .....	15
Association with Living Persons .....	16
Association with Architects/Artisans .....	16
Native American Sites .....	16
Criterion C: Design/Construction .....	17
Understanding Criterion C .....	17
Applying Criterion C .....	18



Distinctive Characteristics of Type, Period, and Method of Construction .....	18
Historic Adaptation of the Original Property .....	19
Works of a Master .....	20
Properties Possessing High Artistic Values .....	20
Criterion D: Information Potential .....	21
Understanding Criterion D .....	21
Applying Criterion D .....	21
Archeological Sites .....	21
Buildings, Structures, and Objects .....	21
Association with Human Activity .....	22
Establishing a Historic Context .....	22
Developing Research Questions .....	22
Establishing the Presence of Adequate Data .....	23
Integrity .....	23
Partly Excavated or Disturbed Properties .....	23
Completely Excavated Sites .....	24
<b>VII. How to Apply the Criteria Considerations .....</b>	<b>25</b>
Introduction .....	25
Criteria Consideration A: Religious Properties .....	26
Understanding Criteria Consideration A .....	26
Applying Criteria Consideration A .....	26
Eligibility for Historic Events .....	26
Eligibility for Historic Persons .....	27
Eligibility for Architectural or Artistic Distinction .....	28
Eligibility for Information Potential .....	28
Ability to Reflect Historic Associations .....	28
Criteria Consideration B: Moved Properties .....	29
Understanding Criteria Consideration B .....	29
Applying Criteria Consideration B .....	29
Eligibility for Architectural Value .....	29
Eligibility for Historic Associations .....	30
Setting and Environment .....	30
Association Dependent on the Site .....	30
Properties Designed to Be Moved .....	31
Artificially Created Groupings .....	31
Portions of Properties .....	31
Criteria Consideration C: Birthplaces and Graves .....	32
Understanding Criteria Consideration C .....	32
Applying Criteria Consideration C .....	32
Persons of Outstanding Importance .....	32
Last Surviving Property Associated with a Person .....	32
Eligibility for Other Associations .....	33
Criteria Consideration D: Cemeteries .....	34
Understanding Criteria Consideration D .....	34
Applying Criteria Consideration D .....	34
Persons of Transcendent Importance .....	34
Eligibility on the Basis of Age .....	35
Eligibility for Design .....	35
Eligibility for Association with Events .....	35
Eligibility for Information Potential .....	35
Integrity .....	36
National Cemeteries .....	36
Criteria Consideration E: Reconstructed Properties .....	37
Understanding Criteria Consideration E .....	37
Applying Criteria Consideration E .....	37
Accuracy of the Reconstruction .....	37
Suitable Environment .....	37
Restoration Master Plans .....	38

Last Surviving Property of a Type .....	38
Reconstructions Older than Fifty Years .....	38
Criteria Consideration F: Commemorative Properties .....	39
Understanding Criteria Consideration F .....	39
Applying Criteria Consideration F .....	39
Eligibility for Design .....	39
Eligibility for Age, Tradition, or Symbolic Value .....	40
Ineligibility as the Last Representative of an Event or Person .....	40
Criteria Consideration G: Properties that Have Achieved Significance Within the Past Fifty Years .....	41
Understanding Criteria Consideration G .....	41
Applying Criteria Consideration G .....	42
Eligibility for Exceptional Importance .....	42
Historical Perspective .....	42
National Park Service Rustic Architecture .....	42
Veterans Administration Hospitals .....	42
Comparison with Related Properties .....	42
World War II Properties .....	42
Eligibility for Information Potential .....	43
Historic Districts .....	43
Properties Over Fifty Years in Age, Under Fifty Years in Significance .....	43
Requirement to Meet the Criteria, Regardless of Age .....	43
<b>VIII. How to Evaluate the Integrity of a Property .....</b>	<b>44</b>
Introduction .....	44
Understanding the Aspects of Integrity .....	44
Location .....	44
Design .....	44
Setting .....	44
Materials .....	45
Workmanship .....	45
Feeling .....	45
Association .....	45
Assessing Integrity in Properties .....	45
Defining the Essential Physical Features .....	46
Visibility of the Physical Features .....	46
Comparing Similar Properties .....	47
Determining the Relevant Aspects of Integrity .....	48
<b>IX. Summary of the National Historic Landmarks Criteria for Evaluation .....</b>	<b>50</b>
<b>X. Glossary .....</b>	<b>53</b>
<b>XI. List of National Register Bulletins .....</b>	<b>54</b>

---

# I. INTRODUCTION

---

The National Register is the nation's inventory of historic places and the national repository of documentation on the variety of historic property types, significance, abundance, condition, ownership, needs, and other information. It is the beginning of a national census of historic properties. The National Register Criteria for Evaluation define the scope of the National Register of Historic Places; they identify the range of resources and kinds of significance that will qualify properties for listing in the National Register. The Criteria are written broadly to recognize the wide variety of historic properties associated with our prehistory and history.

Decisions concerning the significance, historic integrity, documentation, and treatment of properties can be made reliably only when the resource is evaluated within its historic context. The historic context serves as the framework within which the National Register Criteria are applied to specific properties or property types. (See *Part V* for a brief discussion of

historic contexts. Detailed guidance for developing and applying historic contexts is contained in *National Register Bulletin: How to Complete the National Register Registration Form* and *National Register Bulletin: How to Complete the National Register Multiple Property Documentation Form*.)

The guidelines provided here are intended to help you understand the National Park Service's use of the Criteria for Evaluation, historic contexts, integrity, and Criteria Considerations, and how they apply to properties under consideration for listing in the National Register. Examples are provided throughout, illustrating specific circumstances in which properties are and are not eligible for the National Register. This bulletin should be used by anyone who is:

- Preparing to nominate a property to the National Register,
- Seeking a determination of a property's eligibility,
- Evaluating the comparable significance of a property to those listed in the National Register, or

- Expecting to nominate a property as a National Historic Landmark in addition to nominating it to the National Register.

This bulletin also contains a summary of the National Historic Landmarks Criteria for Evaluation (see *Part IX*). National Historic Landmarks are those districts, sites, buildings, structures, and objects designated by the Secretary of the Interior as possessing national significance in American history, architecture, archeology, engineering, and culture. Although National Register documentation includes a recommendation about whether a property is significant at the local, State, or national level, the only official designation of national significance is as a result of National Historic Landmark designation by the Secretary of the Interior, National Monument designation by the President of the United States, or establishment as a unit of the National Park System by Congress. These properties are automatically listed in the National Register.

---

# II. THE NATIONAL REGISTER CRITERIA FOR EVALUATION

---

## CRITERIA FOR EVALUATION:<sup>3</sup>

The quality of significance in American history, architecture, archeology, engineering, and culture is present in districts, sites, buildings, structures, and objects that possess integrity of location, design, setting, materials, workmanship, feeling, and association, and:

- A. That are associated with events that have made a significant contribution to the broad patterns of our history; or
- B. That are associated with the lives of persons significant in our past; or
- C. That embody the distinctive characteristics of a type, period, or method of construction, or that represent the work of a master, or that possess high artistic values, or that represent a significant and distinguishable entity whose components may lack individual distinction; or
- D. That have yielded, or may be likely to yield, information important in prehistory or history.

## CRITERIA CONSIDERATIONS:

Ordinarily cemeteries, birthplaces, or graves of historical figures, properties owned by religious institutions or used for religious purposes, structures that have been moved from their original locations, reconstructed historic buildings, properties primarily commemorative in nature, and properties that have achieved significance within the past 50 years shall not be considered eligible for the National Register. However, such properties *will qualify* if they are integral parts of districts that do meet the criteria or if they fall within the following categories:

- a. A religious property deriving primary significance from architectural or artistic distinction or historical importance; or
- b. A building or structure removed from its original location but which is significant primarily for architectural value, or which is the surviving structure most importantly associated with a historic person or event; or

- c. A birthplace or grave of a historical figure of outstanding importance if there is no appropriate site or building directly associated with his or her productive life; or
- d. A cemetery which derives its primary significance from graves of persons of transcendent importance, from age, from distinctive design features, or from association with historic events; or
- e. A reconstructed building when accurately executed in a suitable environment and presented in a dignified manner as part of a restoration master plan, and when no other building or structure with the same association has survived; or
- f. A property primarily commemorative in intent if design, age, tradition, or symbolic value has invested it with its own exceptional significance; or
- g. A property achieving significance within the past 50 years if it is of exceptional importance.

---

<sup>3</sup>The Criteria for Evaluation are found in the *Code of Federal Regulations, Title 36, Part 60*, and are reprinted here in full.

---

# III. HOW TO USE THIS BULLETIN TO EVALUATE A PROPERTY

---

For a property to qualify for the National Register it must meet one of the National Register Criteria for Evaluation by:

- **Being associated with an important historic context** *and*
- **Retaining historic integrity of those features necessary to convey its significance.**

Information about the property based on physical examination and documentary research is necessary to evaluate a property's eligibility for the National Register. Evaluation of a property is most efficiently made when following this sequence:

1. Categorize the property (Part IV). A property must be classified as

a district, site, building, structure, or object for inclusion in the National Register.

2. **Determine which prehistoric or historic context(s) the property represents** (Part V). A property must possess significance in American history, architecture, archeology, engineering, or culture when evaluated within the historic context of a relevant geographic area.
3. Determine whether the property is significant under the National Register Criteria (Part VI). This is done by identifying the links to important events or persons, design or construction features, or information potential that make the property important.

4. Determine if the property represents a type usually excluded from the National Register (Part VII). If so, determine if it meets any of the Criteria Considerations.
5. Determine whether the property retains integrity (Part VIII). Evaluate the aspects of location, design, setting, workmanship, materials, feeling, and association that the property must retain to convey its historic significance.

If, after completing these steps, the property appears to qualify for the National Register, the next step is to prepare a written nomination. (Refer to *National Register Bulletin: How to Complete the National Register Registration Form.*)

---

# IV. HOW TO DEFINE CATEGORIES OF HISTORIC PROPERTIES

---

The National Register of Historic Places includes significant properties, classified as buildings, sites, districts, structures, or objects. It is not used to list intangible values, except in so far as they are associated with or reflected by historic properties. The National Register does not list cultural events, or skilled or talented individuals, as is done in some countries. Rather, the National Register is oriented to recognizing physically concrete properties that are relatively fixed in location.

For purposes of National Register nominations, small groups of properties are listed under a single category, using the primary resource. For example, a city hall and fountain would be categorized by the city hall (building), a farmhouse with two outbuildings would be categorized by the farmhouse (building), and a city park with a gazebo would be categorized by the park (site). Properties with large acreage or a number of resources are usually considered districts. Common sense and reason should dictate the selection of categories.

## BUILDING

A building, such as a house, barn, church, hotel, or similar construction, is created principally to shelter any form of human activity. "Building" may also be used to refer to a historically and functionally related unit, such as a courthouse and jail or a house and barn.

Buildings eligible for the National Register must include all of their basic structural elements. Parts of buildings, such as interiors, facades, or wings, are not eligible independent of the rest of the existing building. The

whole building must be considered, and its significant features must be identified.

If a building has lost any of its basic structural elements, it is usually considered a "ruin" and is categorized as a site.

### *Examples of buildings include:*

*administration building  
carriage house  
church  
city or town hall  
courthouse  
detached kitchen, barn, and privy  
dormitory  
fort  
garage  
hotel  
house  
library  
mill building  
office building  
post office  
school  
social hall  
shed  
stable  
store  
theater  
train station*

## STRUCTURE

The term "structure" is used to distinguish from buildings those functional constructions made usually for purposes other than creating human shelter.

Structures nominated to the National Register must include all of the extant basic structural elements. Parts of structures can not be considered eligible if the whole structure remains. For example, a truss bridge is composed of the metal or wooden truss, the abutments, and supporting

piers, all of which, if extant, must be included when considering the property for eligibility.

If a structure has lost its historic configuration or pattern of organization through deterioration or demolition, it is usually considered a "ruin" and is categorized as a site.

### *Examples of structures include:*

*aircraft  
apiary  
automobile  
bandstand  
boats and ships  
bridge  
cairn  
canal  
carousel  
corncrib  
dam  
earthwork  
fence  
gazebo  
grain elevator  
highway  
irrigation system  
kiln  
lighthouse  
railroad grade  
silo  
trolley car  
tunnel  
windmill*

## OBJECT

The term “object” is used to distinguish from buildings and structures those constructions that are primarily artistic in nature or are relatively small in scale and simply constructed. Although it may be, by nature or design, movable, an object is associated with a specific setting or environment.

Small objects not designed for a specific location are normally not eligible. Such works include transportable sculpture, furniture, and other decorative arts that, unlike a fixed outdoor sculpture, do not possess association with a specific place.

Objects should be in a setting appropriate to their significant historic use, roles, or character. Objects relocated to a museum are inappropriate for listing in the National Register.

### *Examples of objects include:*

*boundary marker  
fountain  
milepost  
monument  
sculpture  
statuary*

## SITE

A site is the location of a significant event, a prehistoric or historic occupation or activity, or a building or structure, whether standing, ruined, or vanished, where the location itself possesses historic, cultural, or archeological value regardless of the value of any existing structure.

A site can possess associative significance or information potential or both, and can be significant under any or all of the four criteria. A site need not be marked by physical remains if it is the location of a prehistoric or historic event or pattern of events and if no buildings, structures, or objects marked it at the time of the events. However, when the location of a prehistoric or historic event cannot be conclusively determined because no other cultural materials were present or survive, documentation must be carefully evaluated to determine whether the traditionally recognized or identified site is accurate.

A site may be a natural landmark strongly associated with significant prehistoric or historic events or patterns of events, if the significance of the natural feature is well documented through scholarly research. Generally, though, the National Register excludes from the definition of “site” natural waterways or bodies of water that served as determinants in the location of communities or were significant in the locality’s subsequent economic development. While they may have been “avenues of exploration,” the features most appropriate to document this significance are the properties built in association with the waterways.

### *Examples of sites include:*

*battlefield  
campsite  
cemeteries significant for information  
potential or historic association  
ceremonial site  
designed landscape  
habitation site  
natural feature (such as a rock formation)  
having cultural significance  
petroglyph  
rock carving  
rock shelter  
ruins of a building or structure  
shipwreck  
trail  
village site*

## DISTRICT

A district possesses a significant concentration, linkage, or continuity of sites, buildings, structures, or objects united historically or aesthetically by plan or physical development.

### CONCENTRATION, LINKAGE, & CONTINUITY OF FEATURES

A district derives its importance from being a unified entity, even though it is often composed of a wide variety of resources. The identity of a district results from the interrelationship of its resources, which can convey a visual sense of the overall historic environment or be an arrangement of historically or functionally related properties. For example, a district can reflect one principal activity, such as a mill or a ranch, or it can encompass several interrelated activities, such as an area that includes industrial, residential, or

commercial buildings, sites, structures, or objects. A district can also be a grouping of archeological sites related primarily by their common components; these types of districts often will not visually represent a specific historic environment.

## SIGNIFICANCE

A district must be significant, as well as being an identifiable entity. It must be important for historical, architectural, archeological, engineering, or cultural values. Therefore, districts that are significant will usually meet the last portion of Criterion C plus Criterion A, Criterion B, other portions of Criterion C, or Criterion D.

## TYPES OF FEATURES

A district can comprise both features that lack individual distinction and individually distinctive features that serve as focal points. It may even be considered eligible if all of the components lack individual distinction, provided that the grouping achieves significance as a whole within its historic context. In either case, the majority of the components that add to the district’s historic character, even if they are individually undistinguished, must possess integrity, as must the district as a whole.

A district can contain buildings, structures, sites, objects, or open spaces that do not contribute to the significance of the district. The number of noncontributing properties a district can contain yet still convey its sense of time and place and historical development depends on how these properties affect the district’s integrity. In archeological districts, the primary factor to be considered is the effect of any disturbances on the information potential of the district as a whole.

## GEOGRAPHICAL BOUNDARIES

A district must be a definable geographic area that can be distinguished from surrounding properties by changes such as density, scale, type, age, style of sites, buildings, structures, and objects, or by documented differences in patterns of historic development or associations. It is seldom defined, however, by the limits of current parcels of ownership, management, or planning boundaries. The boundaries must be based upon a shared relationship among the properties constituting the district.

## DISCONTIGUOUS DISTRICTS

A district is usually a single geographic area of contiguous historic properties; however, a district can also be composed of two or more definable significant areas separated by nonsignificant areas. A discontinuous district is most appropriate where:

- Elements are spatially discrete;
- Space between the elements is not related to the significance of the district; and
- Visual continuity is not a factor in the significance.

In addition, a canal can be treated as a discontinuous district when the system consists of man-made sections of canal interspersed with sections of river navigation. For scattered archeological properties, a discontinuous district is appropriate when the deposits are related to each other through cultural affiliation, period of use, or site type.

It is not appropriate to use the discontinuous district format to include an isolated resource or small group of resources which were once connected to the district, but have since been separated either through demolition or new construction. For example, do not use the discontinuous district format to nominate individual buildings of a downtown commercial district that have become isolated through demolition.

### ***Examples of districts include:***

*business districts*  
*canal systems*  
*groups of habitation sites*  
*college campuses*  
*estates and farms with large acreage/  
numerous properties*  
*industrial complexes*  
*irrigation systems*  
*residential areas*  
*rural villages*  
*transportation networks*  
*rural historic districts*



***Ordeman-Shaw Historic District, Montgomery, Montgomery County, Alabama. Historic districts derive their identity from the interrelationship of their resources. Part of the defining characteristics of this 19th century residential district in Montgomery, Alabama, is found in the rhythmic pattern of the rows of decorative porches. (Frank L. Thiermonge, III)***



---

# V. HOW TO EVALUATE A PROPERTY WITHIN ITS HISTORIC CONTEXT

---

## UNDERSTANDING HISTORIC CONTEXTS

To qualify for the National Register, a property must be significant; that is, it must represent a significant part of the history, architecture, archeology, engineering, or culture of an area, and it must have the characteristics that make it a good representative of properties associated with that aspect of the past. This section explains how to evaluate a property within its historic context.

The significance of a historic property can be judged and explained only when it is evaluated within its historic context. Historic contexts are those patterns or trends in history by which a specific occurrence, property, or site is understood and its meaning (and ultimately its significance) within history or prehistory is made clear. Historians, architectural historians, folklorists, archeologists, and anthropologists use different words to describe this phenomena such as trend, pattern, theme, or cultural affiliation, but ultimately the concept is the same.

The concept of historic context is not a new one; it has been fundamental to the study of history since the 18th century and, arguably, earlier than that. Its core premise is that resources, properties, or happenings in history do not occur in a vacuum but rather are part of larger trends or patterns.

In order to decide whether a property is significant within its historic context, the following five things must be determined:

- The facet of prehistory or history of the local area, State, or the nation that the property represents;
- Whether that facet of prehistory or history is significant;
- Whether it is a type of property that has relevance and importance in illustrating the historic context;
- How the property illustrates that history; and finally
- Whether the property possesses the physical features necessary to convey the aspect of prehistory or history with which it is associated.

These five steps are discussed in detail below. If the property being evaluated does represent an important aspect of the area's history or prehistory *and* possesses the requisite quality of integrity, then it qualifies for the National Register.

## HOW TO EVALUATE A PROPERTY WITHIN ITS HISTORIC CONTEXT

**Identify what the property represents: the theme(s), geographical limits, and chronological period that provide a perspective from which to evaluate the property's significance.**

Historic contexts are historical patterns that can be identified through consideration of the history of the property and the history of the surrounding area. Historic contexts may have already been defined in your area by the State historic preservation office, Federal agencies, or local governments. In accordance with the National Register Criteria, the historic context may relate to one of the following:

- An event, a series of events or activities, or patterns of an area's development (Criterion A);
- Association with the life of an important person (Criterion B);
- A building form, architectural style, engineering technique, or artistic values, based on a stage of physical development, or the use of a material or method of construction that shaped the historic identity of an area (Criterion C); or
- A research topic (Criterion D).

---

<sup>4</sup> For a complete discussion of historic contexts, see *National Register Bulletin: Guidelines for Completing National Register of Historic Places Registration Forms*.

Determine how the theme of the context is significant in the history of the local area, the State, or the nation.

A theme is a means of organizing properties into coherent patterns based on elements such as environment, social/ethnic groups, transportation networks, technology, or political developments that have influenced the development of an area during one or more periods of prehistory or history. A theme is considered significant if it can be demonstrated, through scholarly research, to be important in American history. Many significant themes can be found in the following list of Areas of Significance used by the National Register.

#### AREAS OF SIGNIFICANCE

Agriculture  
Architecture  
Archeology  
    Prehistoric  
    Historic—Aboriginal  
    Historic—Non-Aboriginal  
Art  
Commerce  
Communications  
Community Planning and Development  
Conservation  
Economics  
Education  
Engineering  
Entertainment/Recreation  
Ethnic Heritage  
    Asian  
    Black  
    European  
    Hispanic  
    Native American  
    Pacific Islander  
    Other  
Exploration/Settlement  
Health/Medicine  
Industry  
Invention  
Landscape Architecture  
Law  
Literature  
Maritime History  
Military  
Performing Arts  
Philosophy  
Politics/Government  
Religion  
Science  
Social History  
Transportation  
Other

Determine what the property type is and whether it is important in illustrating the historic context.

A context may be represented by a variety of important property types. For example, the context of "Civil War Military Activity in Northern Virginia" might be represented by such properties as: a group of mid-19th century fortification structures; an open field where a battle occurred; a knoll from which a general directed troop movements; a sunken transport ship; the residences or public buildings that served as company headquarters; a railroad bridge that served as a focal point for a battle; and earthworks exhibiting particular construction techniques.

Because a historic context for a community can be based on a distinct period of development, it might include numerous property types. For example, the context "Era of Industrialization in Grand Bay, Michigan, 1875 - 1900" could be represented by important property types as diverse as sawmills, paper mill sites, salt refining plants, flour mills, grain elevators, furniture factories, workers housing, commercial buildings, social halls, schools, churches, and transportation facilities.

A historic context can also be based on a single important type of property. The context "Development of County Government in Georgia, 1777 - 1861" might be represented solely by courthouses. Similarly, "Bridge Construction in Pittsburgh, 1870 - 1920" would probably only have one property type.

Determine how the property represents the context through specific historic associations, architectural or engineering values, or information potential (the Criteria for Evaluation).

For example, the context of county government expansion is represented under Criterion A by historic districts or buildings that reflect population growth, development patterns, the role of government in that society, and political events in the history of the State, as well as the impact of county government on the physical development of county seats. Under Criterion C, the context is represented by properties whose architectural treatments reflect their governmental functions, both practically and symbolically. (See *Part VI: How to Identify the Type of Significance of a Property.*)

Determine what physical features the property must possess in order for it to reflect the significance of the historic context.

These physical features can be determined after identifying the following:

- Which types of properties are associated with the historic context,
- The ways in which properties can represent the theme, and
- The applicable aspects of integrity.

Properties that have the defined characteristics are eligible for listing. (See *Part VIII: How to Evaluate the Integrity of a Property.*)

## PROPERTIES SIGNIFICANT WITHIN MORE THAN ONE HISTORIC CONTEXT

A specific property can be significant within one or more historic contexts, and, if possible, all of these should be identified. For example, a public building constructed in the 1830s that is related to the historic context of Civil War campaigns in the area might also be related to the theme of political developments in the community during the 1880s. A property is only required, however, to be documented as significant in one context.

## COMPARING RELATED PROPERTIES

Properties listed in the National Register must possess significance when evaluated in the perspective of their historic context. Once the historic context is established and the property type is determined, it is not necessary to evaluate the property in question against other properties *if*:

- It is the sole example of a property type that is important in illustrating the historic context or
- It clearly possesses the defined characteristics required to strongly represent the context.

If these two conditions do not apply, then the property will have to be evaluated against other examples of the property type to determine its eligibility. The geographic level (local, State, or national) at which this evaluation is made is the same as the level of the historic context. (See *Part V: How to Evaluate a Property Within Its Historic Context.*)

## LOCAL, STATE, AND NATIONAL HISTORIC CONTEXTS

Historic contexts are found at a variety of geographical levels or scales. The geographic scale selected may relate to a pattern of historical development, a political division, or a cultural area. Regardless of the scale, the historic context establishes the framework from which decisions about the significance of related properties can be made.

### LOCAL HISTORIC CONTEXTS

A local historic context represents an aspect of the history of a town, city, county, cultural area, or region, or any portions thereof. It is defined by the importance of the property, not necessarily the physical location of the property. For instance, if a property is of a type found throughout a State, or its boundaries extend over two States, but its importance relates only to a particular county, the property would be considered of local significance.

The level of context of archeological sites significant for their information potential depends on the scope of the applicable research design. For example, a Late Mississippian village site may yield information in a research design concerning one settlement system on a regional scale, while in another research design it may reveal information of local importance concerning a single group's stone tool manufacturing techniques or house forms. It is a question of how the available information potential is likely to be used.

### STATE HISTORIC CONTEXTS

Properties are evaluated in a State context when they represent an aspect of the history of the State as a whole (or American Samoa, the District of Columbia, the Commonwealth of the Northern Mariana Islands, Guam, Puerto Rico, or the Virgin Islands). These properties do not necessarily have to belong to property types

found throughout the entire State: they can be located in only a portion of the State's present political boundary. It is the property's historic context that must be important statewide. For example, the "cotton belt" extends through only a portion of Georgia, yet its historical development in the antebellum period affected the entire State. These State historic contexts may have associated properties that are statewide or locally significant representations. A cotton gin in a small town might be a locally significant representation of this context, while one of the largest cotton producing plantations might be of State significance.

A property whose historic associations or information potential appears to extend beyond a single local area might be significant at the State level. A property can be significant to more than one community or local area, however, without having achieved State significance.

A property that overlaps several State boundaries can possibly be significant to the State or local history of each of the States. Such a property is not necessarily of national significance, however, nor is it necessarily significant to all of the States in which it is located.

Prehistoric sites are not often considered to have "State" significance, *per se*, largely because States are relatively recent political entities and usually do not correspond closely to Native American political territories or cultural areas. Numerous sites, however, may be of significance to a large region that might geographically encompass parts of one, or usually several, States. Prehistoric resources that might be of State significance include regional sites that provide a diagnostic assemblage of artifacts for a particular cultural group or time period or that provide chronological control (specific dates or relative order in time) for a series of cultural groups.

## NATIONAL HISTORIC CONTEXTS

Properties are evaluated in a national context when they represent an aspect of the history of the United States and its territories as a whole. These national historic contexts may have associated properties that are locally or statewide significant representations, as well as those of national significance.

Properties designated as nationally significant and listed in the National Register are the prehistoric and historic units of the National Park System and those properties that have been designated National Historic Landmarks. The National Historic Landmark criteria are the standards for nationally significant properties; they are found in the *Code of Federal*

*Regulations, Title 36, Part 65* and are summarized in this bulletin in *Part IX: Summary of National Historic Landmarks Criteria for Evaluation*.

A property with national significance helps us understand the history of the nation by illustrating the nationwide impact of events or persons associated with the property, its architectural type or style, or information potential. It must be of exceptional value in representing or illustrating an important theme in the history of the nation.

Nationally significant properties do not necessarily have to belong to a property type found throughout the entire country: they can be located in only a portion of the present political boundaries. It is their historic context that must be important nationwide. For example, the American Civil War

was fought in only a portion of the United States, yet its impact was nationwide. The site of a small military skirmish might be a locally significant representation of this national context, while the capture of the State's largest city might be a statewide significant representation of the national context.

When evaluating properties at the national level for designation as a National Historic Landmark, please refer to the National Historic Landmarks outline, *History and Prehistory in the National Park System and the National Historic Landmarks Program 1987*. (For more information about the National Historic Landmarks program, please write to the Department of the Interior, National Park Service, National Historic Landmarks, 1849 C Street, NW, NC400, Washington, DC 20240.)

---

# VI. HOW TO IDENTIFY THE TYPE OF SIGNIFICANCE OF A PROPERTY

---

## INTRODUCTION

When evaluated within its historic context, a property must be shown to be significant for *one or more of the four Criteria for Evaluation - A, B, C, or D* (listed earlier in *Part II*). The Criteria describe how properties are significant for their association with important events or persons, for their importance in design or construction, or for their information potential.

The basis for judging a property's significance and, ultimately, its eligibility under the Criteria is *historic context*. The use of historic context allows a property to be properly evaluated in a nearly infinite number of capacities. For instance, Criterion C: Design/Construction can accommodate properties representing construction types that are unusual or widely practiced, that are innovative or traditional, that are "high style" or vernacular, that are the work of a famous architect or an unknown master craftsman. *The key to determining whether the characteristics or associations of a particular property are significant is to consider the property within its historic context.*

After identifying the relevant historic context(s) with which the property is associated, the four Criteria are applied to the property. Within the scope of the historic context, the National Register Criteria define the kind of significance that the properties represent.

For example, within the context of "19th Century Gunpowder Production in the Brandywine Valley," Criterion A would apply to those properties associated with important events in the founding and development of the industry. Criterion B would apply to those properties associated with persons who are significant in the founding of the industry or associated with important inventions related to gunpowder manufacturing. Criterion C would apply to those buildings, structures, or objects whose architectural form or style reflect important design qualities integral to the industry. And Criterion D would apply to properties that can convey information important in our understanding of this industrial process. If a property qualifies under more than one of the Criteria, its significance under each should be considered, if possible, in order to identify all aspects of its historical value.

## NATIONAL REGISTER CRITERIA FOR EVALUATION\*

The National Register Criteria recognize different types of values embodied in districts, sites, buildings, structures, and objects. These values fall into the following categories:

**Associative value (Criteria A and B):** Properties significant for their association or linkage to events (Criterion A) or persons (Criterion B) important in the past.

**Design or Construction value (Criterion C):** Properties significant as representatives of the manmade expression of culture or technology.

**Information value (Criterion D):** Properties significant for their ability to yield important information about prehistory or history.

\*For a complete listing of the Criteria for Evaluation, refer to Part II of this bulletin.

---

# CRITERION A: EVENT

Properties can be eligible for the National Register if they are associated with events that have made a significant contribution to the broad patterns of our history.

---

## UNDERSTANDING CRITERION A: EVENT

To be considered for listing under Criterion A, a property must be associated with one or more events important in the defined historic context. Criterion A recognizes properties associated with single events, such as the founding of a town, or with a pattern of events, repeated activities, or historic trends, such as the gradual rise of a port city's prominence in trade and commerce. The event or trends, however, must clearly be important within the associated context: settlement, in the case of the town, or development of a maritime economy, in the case of the port city. Moreover, the property must have an important association with the event or historic trends, and it must retain historic integrity. (See *Part V: How to Evaluate a Property Within its Historic Context.*)

Several steps are involved in determining whether a property is significant for its associative values:

- Determine the nature and origin of the property,
- Identify the historic context with which it is associated, and
- Evaluate the property's history to determine whether it is associated with the historic context in any important way.

## APPLYING CRITERION A: EVENT

### TYPES OF EVENTS

A property can be associated with either (or both) of two types of events:

- A specific event marking an important moment in American prehistory or history and
- A pattern of events or a historic trend that made a significant contribution to the development of a community, a State, or the nation.

Refer to the sidebar on the right for a list of specific examples.

### ASSOCIATION OF THE PROPERTY WITH THE EVENTS

The property you are evaluating must be documented, through accepted means of historical or archeological research (including oral history), to have existed at the time of the event or pattern of events and to have been associated with those events. A property is *not* eligible if its associations are speculative. For archeological sites, well reasoned inferences drawn from data recovered at the site can be used to establish the association between the site and the events.

### SIGNIFICANCE OF THE ASSOCIATION

Mere association with historic events or trends is not enough, in and of itself, to qualify under Criterion A: the property's specific association must be considered important as well. For example, a building historically in commercial use must be shown to have been significant in commercial history.

### EXAMPLES OF PROPERTIES ASSOCIATED WITH EVENTS

*Properties associated with specific events:*

- *The site of a battle.*
- *The building in which an important invention was developed.*
- *A factory district where a significant strike occurred.*
- *An archeological site at which a major new aspect of prehistory was discovered, such as the first evidence of man and extinct Pleistocene animals being contemporaneous.*
- *A site where an important facet of European exploration occurred.*

*Properties associated with a pattern of events:*

- *A trail associated with western migration.*
- *A railroad station that served as the focus of a community's transportation system and commerce.*
- *A mill district reflecting the importance of textile manufacturing during a given period.*
- *A building used by an important local social organization.*
- *A site where prehistoric Native Americans annually gathered for seasonally available resources and for social interaction.*
- *A downtown district representing a town's growth as the commercial focus of the surrounding agricultural area.*







# APPLYING CRITERION B: PERSON

## SIGNIFICANCE OF THE INDIVIDUAL

The persons associated with the property must be *individually* significant within a historic context. A property is not eligible if its only justification for significance is that it was owned or used by a person who is a member of an identifiable profession, class, or social or ethnic group. It must be shown that the person gained importance within his or her profession or group.

### Eligible

- The residence of a doctor, a mayor, or a merchant is eligible under Criterion B if the person was significant in the field of medicine, politics, or commerce, respectively.

### Not Eligible

- A property is not eligible under Criterion B if it is associated with an individual about whom no scholarly judgement can be made because either research has not revealed specific information about the person's activities and their impact, or there is insufficient perspective to determine whether those activities or contributions were historically important.

## ASSOCIATION WITH THE PROPERTY

Properties eligible under Criterion B are usually those associated with a person's *productive* life, reflecting the time period when he or she achieved significance. In some instances this may be the person's home; in other cases, a person's business, office, laboratory, or studio may best represent his or her contribution. Properties that pre- or post-date an individual's significant accomplishments are usually not eligible. (See *Comparison to Related Properties*, below, for exceptions to this rule.)

The individual's association with the property must be documented by accepted methods of historical or archeological research, including written or oral history. Speculative associations are not acceptable. For archeological sites, well reasoned inferences drawn from data recovered at the site are acceptable.

## COMPARISON TO RELATED PROPERTIES

Each property associated with an important individual should be compared to other associated properties to identify those that best represent the person's historic contributions. The best representatives usually are properties associated with the person's adult or *productive* life. Properties associated with an individual's formative or later years may also qualify if it can be demonstrated that the person's activities during this period were historically significant or if no properties from the person's productive years survives. Length of association is an important factor when assessing several properties with similar associations.

A community or State may contain several properties eligible for associations with the same important person, if each represents a different aspect of the person's productive life. A property can also be eligible if it has brief but consequential associations with an important individual. (Such associations are often related to specific events that occurred at the property and, therefore, it may also be eligible under Criterion A.)

## ASSOCIATION WITH GROUPS

For properties associated with several community leaders or with a prominent family, it is necessary to identify specific individuals and to explain their significant accomplishments.

### Eligible

- A residential district in which a large number of prominent or influential merchants, professionals, civic leaders, politicians, etc., lived will be eligible under Criterion B if the significance of one or more specific individual residents is explicitly justified.
- A building that served as the seat of an important family is eligible under Criterion B if the significant accomplishments of one or more individual family members is explicitly justified.

### Not Eligible

- A residential district in which a large number of influential persons lived is not eligible under Criterion B if the accomplishments of a specific individual(s) cannot be documented. If the significance of the district rests in the cumulative importance of prominent residents, however, then the district might still be eligible under Criterion A. Eligibility, in this case, would be based on the broad pattern of community development, through which the neighborhood evolved into the primary residential area for this class of citizens.
- A building that served as the seat of an important family will not be eligible under Criterion B if the significant accomplishments of individual family members cannot be documented. In cases where a succession of family members have lived in a house and collectively have had a demonstrably significant impact on the community, as a family, the house is more likely to be significant under Criterion A for association with a pattern of events.

## ASSOCIATION WITH LIVING PERSONS

Properties associated with living persons are usually not eligible for inclusion in the National Register. Sufficient time must have elapsed to assess both the person's field of endeavor and his/her contribution to that field. Generally, the person's active participation in the endeavor must be finished for this historic perspective to emerge. (See Criteria Considerations C and G in *Part VII: How to Apply the Criteria Considerations*.)

## ASSOCIATION WITH ARCHITECTS/ARTISANS

Architects, artisans, artists, and engineers are often represented by their works, which are eligible under Criterion C. Their homes and studios, however, can be eligible for consideration under Criterion B, because these usually are the properties with which they are most personally associated.

## NATIVE AMERICAN SITES

The known major villages of individual Native Americans who were important during the contact period or later can qualify under Criterion B. As with all Criterion B properties, the individual associated with the property must have made some specific important contribution to history. Examples include sites significantly associated with Chief Joseph and Geronimo.<sup>7</sup>

---

<sup>7</sup> For more information, refer to *National Register Bulletin: Guidelines for Evaluating and Documenting Traditional Cultural Properties*.



**EXAMPLES OF PROPERTIES ASSOCIATED WITH DESIGN/ CONSTRUCTION**

*Properties associated with design and construction:*

- *A house or commercial building representing a significant style of architecture.*
- *A designed park or garden associated with a particular landscape design philosophy.*
- *A movie theater embodying high artistic value in its decorative features.*
- *A bridge or dam representing technological advances.*

**APPLYING CRITERION C: DESIGN/ CONSTRUCTION**

**DISTINCTIVE CHARACTERISTICS OF TYPE, PERIOD, AND METHOD OF CONSTRUCTION**

This is the portion of Criterion C under which most properties are eligible, for it encompasses all architectural styles and construction practices. To be eligible under this portion of the Criterion, a property must clearly illustrate, through "distinctive characteristics," the following:

- The pattern of features common to a particular class of resources,
- The individuality or variation of features that occurs within the class,
- The evolution of that class, or
- The transition between classes of resources.

**Distinctive Characteristics:** "Distinctive characteristics" are the physical features or traits that commonly recur in individual types, periods, or methods of construction. To be eligible, a property must clearly contain enough of those characteristics to be considered a true representative of a particular type, period, or method of construction.

Characteristics can be expressed in terms such as form, proportion, structure, plan, style, or materials. They can be general, referring to ideas of design and construction such as basic plan or form, or they can be specific, referring to precise ways of combining particular kinds of materials.

**Eligible**

- A building eligible under the theme of Gothic Revival architecture must have the distinctive characteristics that make up the vertical and picturesque qualities of the style, such as pointed gables, steep roof pitch, board and batten siding, and ornamental bargeboard and veranda trim.
- A late Mississippian village that illustrates the important concepts in prehistoric community design and planning will qualify.
- A designed historic landscape will qualify if it reflects a historic trend or school of theory and practice, such as the City Beautiful Movement, evidencing distinguished design, layout, and the work of skilled craftsmanship.

**Not Eligible**

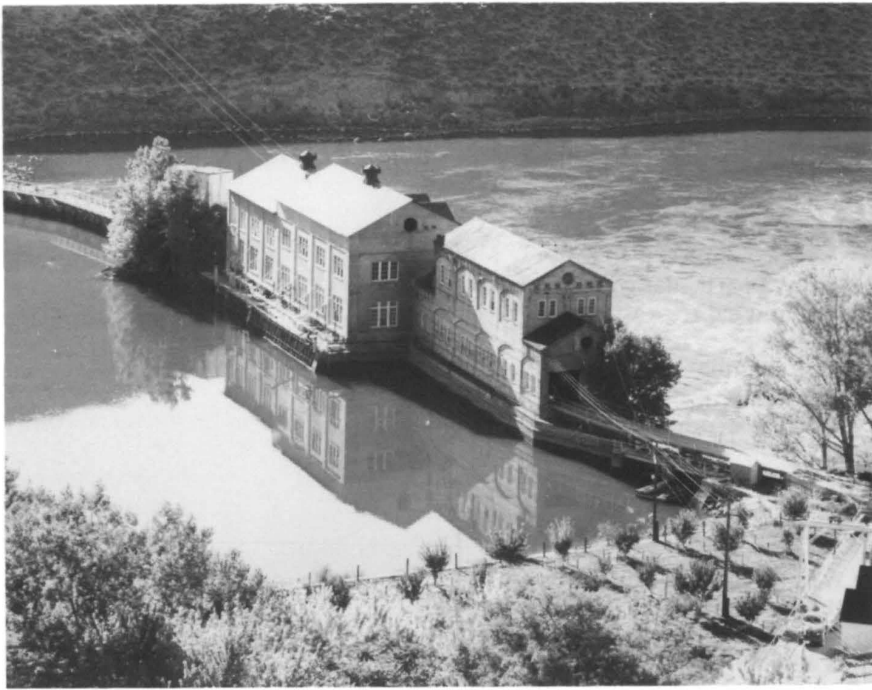
- A commercial building with some Art Deco detailing is not eligible under Criterion C if the detailing was added merely as an afterthought, rather than fully integrated with overall lines and massing typical of the Art Deco style or the transition between that and another style.
- A designed landscape that has had major changes to its historic design, vegetation, original boundary, topography/grading, architectural features, and circulation system will not qualify.

**Type, Period, and Method of Construction:** "Type, period, or method of construction" refers to the way certain properties are related to one another by cultural tradition or function, by dates of construction or style, or by choice or availability of materials and technology.

A structure is eligible as a specimen of its type or period of construction if it is an important example (within its context) of building practices of a particular time in history. For properties that represent the variation, evolution, or transition of construction types, it must be demonstrated that the variation, etc., was an important phase of the architectural development of the area or community in that it had an impact as evidenced by later buildings. A property is not eligible, however, simply because it has been identified as the only such property ever fabricated; it must be demonstrated to be significant as well.

**Eligible**

- A building that has some characteristics of the Romanesque Revival style and some characteristics of the Commercial style can qualify if it illustrates the transition of architectural design and the transition itself is considered an important architectural development.
- A Hopewellian mound, if it is an important example of mound building construction techniques, would qualify as a method or type of construction.
- A building which illustrates the early or the developing technology of particular structural systems, such as skeletal steel framing, is eligible as an example of a particular method of construction.



**Swan Falls Dam and Power Plant**, Murphy vicinity, Ada County, Idaho. Significant works of engineering can qualify under Criterion C. Built between 1900-1907 the Swan Falls Dam and Power Plant across the Snake River is one of the early hydroelectric plants in the State of Idaho. (Photo by H.L. Hough).

## HISTORIC ADAPTATION OF THE ORIGINAL PROPERTY

A property can be significant not only for the way it was originally constructed or crafted, but also for the way it was adapted at a later period, or for the way it illustrates changing tastes, attitudes, and uses over a period of time.

A district is eligible under this guideline if it illustrates the evolution of historic character of a place over a particular span of time.

### Eligible

- A Native American irrigation system modified for use by Europeans could be eligible if it illustrates the technology of either or both periods of construction.
- An early 19th century farmhouse modified in the 1880s with Queen Anne style ornamentation could be significant for the modification itself, if it represented a local variation or significant trend in building construction or remodeling, was the work of a local master (see *Works of a Master* on page 20), or reflected the tastes of an important person associated with the property at the time of its alteration.
- A district encompassing the commercial development of a town between 1820 and 1910, characterized by buildings of various styles and eras, can be eligible.

**Looney House**, Asheville vicinity, St. Clair County, Alabama. Examples of vernacular styles of architecture can qualify under Criterion C. Built ca. 1818, the Looney House is significant as possibly the State's oldest extant two-story dogtrot type of dwelling. The defining open center passage of the dogtrot was a regional building response to the southern climate. (Photo by Carolyn Scott).

## WORKS OF A MASTER

A master is a figure of generally recognized greatness in a field, a known craftsman of consummate skill, or an anonymous craftsman whose work is distinguishable from others by its characteristic style and quality. The property must express a particular phase in the development of the master's career, an aspect of his or her work, or a particular idea or theme in his or her craft.

A property is not eligible as the work of a master, however, simply because it was designed by a prominent architect. For example, not every building designed by Frank Lloyd Wright is eligible under this portion of Criterion C, although it might meet other portions of the Criterion, for instance as a representative of the Prairie style.

The work of an unidentified craftsman is eligible if it rises above the level of workmanship of the other properties encompassed by the historic context.

## PROPERTIES POSSESSING HIGH ARTISTIC VALUES

High artistic values may be expressed in many ways, including areas as diverse as community design or planning, engineering, and sculpture. A property is eligible for its high artistic values if it so fully articulates a particular concept of design that it expresses an aesthetic ideal. A property is not eligible, however, if it does not express aesthetic ideals or design concepts more fully than other properties of its type.

### Eligible

- A sculpture in a town square that epitomizes the design principles of the Art Deco style is eligible.
- A building that is a classic expression of the design theories of the Craftsman Style, such as carefully detailed handwork, is eligible.
- A landscaped park that synthesizes early 20th century principles of landscape architecture and expresses an aesthetic ideal of environment can be eligible.
- Properties that are important representatives of the aesthetic values of a cultural group, such as petroglyphs and ground drawings by Native Americans, are eligible.

### Not Eligible

- A sculpture in a town square that is a typical example of sculpture design during its period would not qualify for high artistic value, although it might be eligible if it were significant for other reasons.
- A building that is a modest example (within its historic context) of the Craftsman Style of architecture, or a landscaped park that is characteristic of turn of the century landscape design would not qualify for high artistic value.

**A Significant and Distinguishable Entity Whose Components May Lack Individual Distinction.** This portion of Criterion C refers to districts. For detailed information on districts, refer to *Part IV* of this bulletin.

---

# CRITERION D: INFORMATION POTENTIAL

---

Properties may be eligible for the National Register if they have yielded, or may be likely to yield, information important in prehistory or history.

---

## UNDERSTANDING CRITERION D: INFORMATION POTENTIAL

Certain important research questions about human history can only be answered by the actual physical material of cultural resources. Criterion D encompasses the properties that have the potential to answer, in whole or in part, those types of research questions. The most common type of property nominated under this Criterion is the archeological site (or a district comprised of archeological sites). Buildings, objects, and structures (or districts comprised of these property types), however, can also be eligible for their information potential.

Criterion D has two requirements, which must *both* be met for a property to qualify:

- The property must have, or have had, information to contribute to our understanding of human history or prehistory, and
- The information must be considered important.

Under the first of these requirements, a property is eligible if it has been used as a source of data and contains more, as yet unretrieved data. A property is also eligible if it has not yet yielded information but, through testing or research, is determined a likely source of data.

Under the second requirement, the information must be carefully evaluated within an appropriate context to determine its importance. Information is considered "important" when it is shown to have a significant bearing on a research design that addresses such areas as: 1) current

data gaps or alternative theories that challenge existing ones or 2) priority areas identified under a State or Federal agency management plan.

## APPLYING CRITERION D: INFORMATION POTENTIAL

### ARCHEOLOGICAL SITES

Criterion D most commonly applies to properties that contain or are likely to contain information bearing on an important archeological research question. The property must have characteristics suggesting the likelihood that it possesses configurations of artifacts, soil strata, structural remains, or other natural or cultural features that make it possible to do the following:

- Test a hypothesis or hypotheses about events, groups, or processes in the past that bear on important research questions in the social or natural sciences or the humanities; or
- Corroborate or amplify currently available information suggesting that a hypothesis is either true or false; or
- Reconstruct the sequence of archeological cultures for the purpose of identifying and explaining continuities and discontinuities in the archeological record for a particular area.

### BUILDINGS, STRUCTURES, AND OBJECTS

While most often applied to archeological districts and sites, Criterion D can also apply to buildings, structures, and objects that contain important information. In order for these types of properties to be eligible under Criterion D, they themselves must be, or must have been, the principal source of the important information.

#### Eligible

- A building exhibiting a local variation on a standard design or construction technique can be eligible if study could yield important information, such as how local availability of materials or construction expertise affected the evolution of local building development.

#### Not Eligible

- The ruins of a hacienda once contained murals that have since been destroyed. Historical documentation, however, indicates that the murals were significant for their highly unusual design. The ruins can not be eligible under Criterion D for the importance of the destroyed murals if the information is contained only in the documentation.





## ESTABLISHING THE PRESENCE OF ADEQUATE DATA

To support the assertion that a property has the data necessary to provide the important information, the property should be investigated with techniques sufficient to establish the presence of relevant data categories. What constitutes appropriate investigation techniques would depend upon specific circumstances including the property's location, condition, and the research questions being addressed, and could range from surface survey (or photographic survey for buildings), to the application of remote sensing techniques or intensive subsurface testing. Justification of the research potential of a property may be based on analogy to another better known property if sufficient similarities exist to establish the appropriateness of the analogy.

### Eligible

- Data requirements depend on the specific research topics and questions to be addressed. To continue the example in "Developing Research Questions" above, we might want to ascertain the following with reference to questions A, B, and C: A) The site contains Ceramic Type X in one or more occupation levels and we expect to be able to document the local evaluation of the type or its intrusive nature. B) The hearths contain datable carbon deposits and are associated with more than one occupation. C) The midden deposits show good floral/faunal preservation, and we know enough about the physical evolution of food plants to interpret signs that suggest domestication.

### Not Eligible

- Generally, if the applicable research design requires clearly stratified deposits, then subsurface investigation techniques must be applied. A site composed only of surface materials can not be eligible for its potential to yield information that could only be found in stratified deposits.

## INTEGRITY

The assessment of integrity for properties considered for information potential depends on the data requirements of the applicable research design. A property possessing information potential does not need to recall *visually* an event, person, process, or construction technique. It is important that the significant data contained in the property remain sufficiently intact to yield the expected important information, if the appropriate study techniques are employed.

### Eligible

- An irrigation system significant for the information it will yield on early engineering practices can still be eligible even though it is now filled in and no longer retains the appearance of an open canal.

### Not Eligible

- A plowed archeological site contains several superimposed components that have been mixed to the extent that artifact assemblages cannot be reconstructed. The site cannot be eligible if the data requirements of the research design call for the study of artifacts specific to one component.

## PARTLY EXCAVATED OR DISTURBED PROPERTIES

The current existence of appropriate physical remains must be ascertained in considering a property's ability to yield important information. Properties that have been partly excavated or otherwise disturbed and that are being considered for their potential to yield additional important information must be shown to retain that potential in their remaining portions.

### Eligible

- A site that has been partially excavated but still retains substantial intact deposits (or a site in which the remaining deposits are small but contain critical information on a topic that is not well known) is eligible.

### Not Eligible

- A totally collected surface site or a completely excavated buried site is not eligible since the physical remains capable of yielding important information no longer exist at the site. (See *Completely Excavated Sites*, on page 24, for exception.) Likewise, a site that has been looted or otherwise disturbed to the extent that the remaining cultural materials have lost their important depositional context (horizontal or vertical location of deposits) is not eligible.
- A reconstructed mound or other reconstructed site will generally not be considered eligible, because original cultural materials or context or both have been lost.

## COMPLETELY EXCAVATED SITES

Properties that have yielded important information in the past and that no longer retain additional research potential (such as completely excavated archeological sites) must be assessed essentially as historic sites under Criterion A. Such sites must be significant for associative values related to: 1) the importance of the data gained or 2) the impact of the property's role in the history of the development of anthropology/ archeology or other relevant disciplines. Like other historic properties, the site must retain the ability to convey its association as the former repository of important information, the location of historic events, or the representative of important trends.

### **Eligible**

- A property that has been excavated is eligible if the data recovered was of such importance that it influenced the direction of research in the discipline, as in a site that clearly established the antiquity of the human occupation of the New World. (See Criterion A in *Part VI: How to Identify the Type of Significance of a Property* and Criteria Consideration G in *Part VII: How to Apply the Criteria Considerations*.)

### **Not Eligible**

- A totally excavated site that at one time yielded important information but that no longer can convey either its historic/ prehistoric utilization or significant modern investigation is not eligible.

---

# VII. HOW TO APPLY THE CRITERIA CONSIDERATIONS

---

## INTRODUCTION

Certain kinds of properties are not usually considered for listing in the National Register: religious properties, moved properties, birthplaces and graves, cemeteries, reconstructed properties, commemorative properties, and properties achieving significance within the past fifty years. These properties *can* be eligible for listing, however, if they meet special requirements, called Criteria Considerations, in addition to meeting the regular requirements (that is, being eligible under one or more of the four Criteria and possessing integrity). *Part VII* provides guidelines for determining which properties must meet these special requirements and for applying each Criteria Consideration.

The Criteria Considerations need to be applied only to *individual* properties. Components of eligible districts do not have to meet the special requirements unless they make up the majority of the district or are the focal point of the district. These are the general steps to follow when applying the Criteria Considerations to your property:

- Before looking at the Criteria Considerations, make sure your property meets one or more of the four Criteria for Evaluation and possesses integrity.
- If it does, check the Criteria Considerations (next column) to see if

the property is of a type that is usually excluded from the National Register. The sections that follow also list specific examples of properties of each type. If your property clearly *does not* fit one of these types, then it does not need to meet any special requirements.

- If your property *does* fit one of these types, then it must meet the special requirements stipulated for that type in the Criteria Considerations.

## CRITERIA CONSIDERATIONS\*

Ordinarily cemeteries, birthplaces, or graves of historical figures, properties owned by religious institutions or used for religious purposes, structures that have been moved from their original locations, reconstructed historic buildings, properties primarily commemorative in nature, and properties that have achieved significance within the past fifty years shall not be considered eligible for the National Register. However, such properties will qualify if they are integral parts of districts that do meet the criteria or if they fall within the following categories:

- a. a religious property deriving primary significance from architectural or artistic distinction or historical importance; or

- b. a building or structure removed from its original location but which is significant primarily for architectural value, or which is the surviving structure most importantly associated with a historic person or event; or

- c. a birthplace or grave of a historical figure of outstanding importance if there is no appropriate site or building directly associated with his or her productive life; or

- d. a cemetery which derives its primary significance from graves of persons of transcendent importance, from age, from distinctive design features, from association with historic events; or

- e. a reconstructed building when accurately executed in a suitable environment and presented in a dignified manner as part of a restoration master plan, and when no other building or structure with the same association has survived; or

- f. a property primarily commemorative in intent if design, age, tradition, or symbolic value has invested it with its own exceptional significance; or,

- g. a property achieving significance within the past 50 years if it is of exceptional importance.

\*The Criteria Considerations are taken from the Criteria for Evaluation, found in the *Code of Federal Regulations, Title 36, Part 60.*

---

# CRITERIA CONSIDERATION A: RELIGIOUS PROPERTIES

A religious property is eligible if it derives its primary significance from architectural or artistic distinction or historical importance.

---

## UNDERSTANDING CRITERIA CONSIDERATION A: RELIGIOUS PROPERTIES

A religious property requires justification on architectural, artistic, or historic grounds to avoid any appearance of judgment by government about the validity of any religion or belief. Historic significance for a religious property cannot be established on the merits of a religious doctrine, but rather, for architectural or artistic values or for important historic or cultural forces that the property represents. A religious property's significance under Criterion A, B, C, or D must be judged in purely secular terms. A religious group may, in some cases, be considered a cultural group whose activities are significant in areas broader than religious history.

Criteria Consideration for Religious Properties applies:

- If the resource was constructed by a religious institution.
- If the resource is presently owned by a religious institution or is used for religious purposes.
- If the resource was owned by a religious institution or used for religious purposes during its Period of Significance.
- If Religion is selected as an Area of Significance.

### *Examples of Properties that MUST Meet Criteria Consideration A: Religious Properties*

- *A historic church where an important non-religious event occurred, such as a speech by Patrick Henry.*
- *A historic synagogue that is significant for architecture.*
- *A private residence is the site of a meeting important to religious history.*
- *A commercial block that is currently owned as an investment property by a religious institution.*
- *A historic district in which religion was either a predominant or significant function during the period of significance.*

### *Example of Properties that DO NOT Need to Meet Criteria Consideration A: Religious Properties*

- *A residential or commercial district that currently contains a small number of churches that are not a predominant feature of the district.*
- *A town meeting hall that serves as the center of community activity and houses a wide variety of public and private meetings, including religious service. The resource is significant for architecture and politics, and the religious function is incidental.*
- *A town hall, significant for politics from 1875 to 1925, that housed religious services during the 1950s. Since the religious function occurred after the Period of Significance, the Criteria Consideration does not apply.*

## APPLYING CRITERIA CONSIDERATION A: RELIGIOUS PROPERTIES

### ELIGIBILITY FOR HISTORIC EVENTS

A religious property can be eligible under Criterion A for any of three reasons:

- It is significant under a theme in the history of religion having secular scholarly recognition; or
- It is significant under another historical theme, such as exploration, settlement, social philanthropy, or education; or
- It is significantly associated with traditional cultural values.

## RELIGIOUS HISTORY

A religious property can be eligible if it is directly associated with either a specific event or a broad pattern in the history of religion.

### Eligible

- The site of a convention at which a significant denominational split occurred meets the requirements of Criteria Consideration A. Also eligible is a property that illustrates the broad impact of a religious institution on the history of a local area.

### Not Eligible

- A religious property cannot be eligible simply because was the place of religious services for a community, or was the oldest structure used by a religious group in a local area.

## OTHER HISTORICAL THEMES

A religious property can be eligible if it is directly associated with either a specific event or a broad pattern that is significant in another historic context. A religious property would also qualify if it were significant for its associations that illustrate the importance of a particular religious group in the social, cultural, economic, or political history of the area. Eligibility depends on the importance of the event or broad pattern and the role of the specific property.

### Eligible

- A religious property can qualify for its important role as a temporary hospital during the Revolutionary War, or if its school was significant in the history of education in the community.

### Not Eligible

- A religious property is not significant in the history of education in a community simply because it had occasionally served as a school.

## TRADITIONAL CULTURAL VALUES

When evaluating properties associated with traditional cultures, it is important to recognize that often these cultures do not make clear distinctions between what is secular and what is sacred. Criteria Consideration A is not intended to exclude traditional cultural resources merely because they have religious uses or are considered sacred. A property or natural feature important to a traditional culture's religion and mythology is eligible if its importance has been ethnohistorically documented and if the site can be clearly defined. It is critical, however, that the activities be documented and that the associations not be so diffuse that the physical resource cannot be adequately defined.<sup>8</sup>

### Eligible

- A specific location or natural feature that an Indian tribe believes to be its place of origin and that is adequately documented qualifies under Criteria Consideration A.

## ELIGIBILITY FOR HISTORIC PERSONS

A religious property can be eligible for association with a person important in religious history, if that significance has scholarly, secular recognition or is important in other historic contexts. Individuals who would likely be considered significant are those who formed or significantly influenced an important religious institution or movement, or who were important in the social, economic, or political history of the area. Properties associated with individuals important only within the context of a single congregation and lacking importance in any other historic context would not be eligible under Criterion B.

### Eligible

- A religious property strongly associated with a religious leader, such as George Whitefield or Joseph Smith, is eligible.

<sup>8</sup> For more information on applying Criteria Consideration A to traditional cultural properties, refer to *National Register Bulletin: Guidelines for Evaluating and Documenting Traditional Cultural Properties*.



---

# CRITERIA CONSIDERATION B: MOVED PROPERTIES

A property removed from its original or historically significant location can be eligible if it is significant primarily for architectural value or it is the surviving property most importantly associated with a historic person or event.

---

## UNDERSTANDING CRITERIA CONSIDERATION B: MOVED PROPERTIES

The National Register criteria limit the consideration of moved properties because significance is embodied in locations and settings as well as in the properties themselves. Moving a property destroys the relationships between the property and its surroundings and destroys associations with historic events and persons. A move may also cause the loss of historic features such as landscaping, foundations, and chimneys, as well as loss of the potential for associated archeological deposits. Properties that were moved *before* their period of significance do not need to meet the special requirements of Criteria Consideration B.

One of the basic purposes of the National Register is to encourage the preservation of historic properties as living parts of their communities. In keeping with this purpose, it is not usual to list artificial groupings of buildings that have been created for purposes of interpretation, protection, or maintenance. Moving buildings to such a grouping destroys the integrity of location and setting, and can create a false sense of historic development.

## APPLYING CRITERIA CONSIDERATION B: MOVED PROPERTIES

### ELIGIBILITY FOR ARCHITECTURAL VALUE

A moved property significant under Criterion C must retain enough historic features to convey its architectural values and retain integrity of design, materials, workmanship, feeling, and association.

### *Examples of Properties that MUST Meet Criteria Consideration B: Moved Properties*

- A resource moved from one location on its original site to another location on the property, during or after its Period of Significance.
- A district in which a significant number of resources have been moved from their original location.
- A district which has one moved building that makes an especially significant contribution to the district.
- A portable resource, such as a ship or railroad car, that is relocated to a place incompatible with its original function.
- A portable resource, such as a ship or railroad car, whose importance is critically linked to its historic location or route and that is moved.

### *Examples of Properties that DO NOT Need to Meet Criteria Consideration B: Moved Properties*

- A property that is moved prior to its Period of Significance.
- A district in which only a small percentage of typical buildings in a district are moved.
- A moved building that is part of a complex but is of less significance than the remaining (unmoved) buildings.
- A portable resource, such as a ship or railroad car, that is eligible under Criterion C and is moved within its natural setting (water, rails, etc.).
- A property that is raised or lowered on its foundations.

## ELIGIBILITY FOR HISTORIC ASSOCIATIONS

A moved property significant under Criteria A or B must be demonstrated to be the surviving property most importantly associated with a particular historic event or an important aspect of a historic person's life. The phrase "most importantly associated" means that it must be the single surviving property that is most closely associated with the event or with the part of the person's life for which he or she is significant.

### Eligible

- A moved building occupied by an business woman during the majority of her productive career would be eligible if the other extant properties are a house she briefly inhabited prior to her period of significance and a commercial building she owned after her retirement.

### Not Eligible

- A moved building associated with the beginning of rail transportation in a community is not eligible if the original railroad station and warehouse remained intact on their original sites.

## SETTING AND ENVIRONMENT

In addition to the requirements above, moved properties must still have an orientation, setting, and general environment that are comparable to those of the historic location and that are compatible with the property's significance.

### Eligible

- A property significant as an example of mid-19th century rural house type can be eligible after a move, provided that it is placed on a lot that is sufficient in size and character to recall the basic qualities of the historic environment and setting, and provided that the building is sited appropriately in relation to natural and manmade surroundings.

### Not Eligible

- A rural house that is moved into an urban area and a bridge that is no longer situated over a waterway are not eligible.

## ASSOCIATION DEPENDENT ON THE SITE

For a property whose design values or historical associations are directly dependent on its location, any move will cause the property to lose its integrity and prevent it from conveying its significance.

### Eligible

- A farm structure significant only as an example of a method of construction peculiar to the local area is still eligible if it is moved within that local area and the new setting is similar to that of the original location.

### Not Eligible

- A 19th century rural residence that was designed around particular topographic features, reflecting that time period's ideals of environment, is not eligible if moved.



## PROPERTIES DESIGNED TO BE MOVED

A property designed to move or a property frequently moved during its historic use must be located in a historically appropriate setting in order to qualify, retaining its integrity of setting, design, feeling, and association. Such properties include automobiles, railroad cars and engines, and ships.

### Eligible

- A ship docked in a harbor, a locomotive on tracks or in a railyard, and a bridge relocated from one body of water to another are eligible.

### Not Eligible

- A ship on land in a park, a bridge placed in a pasture, or a locomotive displayed in an indoor museum are not eligible.

## ARTIFICIALLY CREATED GROUPINGS

An artificially created grouping of buildings, structures, or objects is not eligible unless it has achieved significance since the time of its assemblage. It cannot be considered as a reflection of the time period when the individual buildings were constructed.

### Eligible

- A grouping of moved historic buildings whose creation marked the beginning of a major concern with past lifestyles can qualify as an early attempt at historic preservation and as an illustration of that generation's values.

### Not Eligible

- A rural district composed of a farmhouse on its original site and a grouping of historic barns recently moved onto the property is not eligible.

## PORTIONS OF PROPERTIES

A moved *portion* of a building, structure, or object is not eligible because, as a fragment of a larger resource, it has lost integrity of design, setting, materials, workmanship, and location.

---

# CRITERIA CONSIDERATION C: BIRTHPLACES OR GRAVES

A birthplace or grave of a historical figure is eligible if the person is of outstanding importance and if there is no other appropriate site or building directly associated with his or her productive life.

---

## UNDERSTANDING CRITERIA CONSIDERATION C: BIRTHPLACES AND GRAVES

Birthplaces and graves often attain importance as reflections of the origins of important persons or as lasting memorials to them. The lives of persons significant in our past normally are recognized by the National Register through listing of properties illustrative of or associated with that person's productive life's work. Birthplaces and graves, as properties that represent the beginning and the end of the life of distinguished individuals, may be temporally and geographically far removed from the person's significant activities, and therefore are not usually considered eligible.

### *Examples of Properties that MUST Meet Criteria Consideration C: Birthplaces and Graves*

- *The birthplace of a significant person who lived elsewhere during his or her Period of Significance.*
- *A grave that is nominated for its association with the significant person buried in it.*
- *A grave that is nominated for information potential.*

### *Examples of Properties that DO NOT Need to Meet Criteria Consideration C: Birthplaces and Graves*

- *A house that was inhabited by a significant person for his or her entire lifetime.*
- *A grave located on the grounds of the house where a significant person spent his or her productive years.*

## APPLYING CRITERIA CONSIDERATION C: BIRTHPLACES AND GRAVES

### PERSONS OF OUTSTANDING IMPORTANCE

The phrase "a historical figure of outstanding importance" means that in order for a birthplace or grave to qualify, it cannot be simply the birthplace or grave of a person significant in our past (Criterion B). It must be the birthplace or grave of an individual who was of outstanding importance in the history of the local area, State, or nation. The birthplace or grave of an individual who was one of several people active in some aspect of the history of a community, a state, or the Nation would not be eligible.

### LAST SURVIVING PROPERTY ASSOCIATED WITH A PERSON

When an geographical area strongly associated with a person of outstanding importance has lost all other properties directly associated with his or her formative years or productive life, a birthplace or grave may be eligible.

## ELIGIBILITY FOR OTHER ASSOCIATIONS

A birthplace or grave can also be eligible if it is significant for reasons other than association with the productive life of the person in question. It can be eligible for significance under Criterion A for association with important events, under Criterion B for association with the productive lives of *other* important persons, or under Criterion C for architectural significance. A birthplace or grave can also be eligible in rare cases if, after the passage of time, it is significant for its commemorative value. (See Criteria Consideration F for a discussion of commemorative properties.) A birthplace or grave can also be eligible under Criterion D if it contains important information on research, e.g., demography, pathology, mortuary practices, socioeconomic status differentiation.



**Criteria Consideration C - Birthplaces.** *A birthplace of a historical figure is eligible if the person is of outstanding importance and there is no other appropriate site or building associated with his or her productive life. The **Walter Reed Birthplace**, Gloucester vicinity, Gloucester County, Virginia is the most appropriate remaining building associated with the life of the man who, in 1900, discovered the cause and mode of transmission of the great scourge of the tropics, yellow fever. (Virginia Historic Landmarks Commission)*



## ELIGIBILITY ON THE BASIS OF AGE

Cemeteries can be eligible if they have achieved historic significance for their relative great age in a particular geographic or cultural context.

### Eligible

- A cemetery dating from a community's original 1830s settlement can attain significance from its association with that very early period.

## ELIGIBILITY FOR DESIGN

Cemeteries can qualify on the basis of distinctive design values. These values refer to the same design values addressed in Criterion C and can include aesthetic or technological achievement in the fields of city planning, architecture, landscape architecture, engineering, mortuary art, and sculpture. As for all other nominated properties, a cemetery must clearly express its design values and be able to convey its historic appearance.

### Eligible

- A Victorian cemetery is eligible if it clearly expresses the aesthetic principles related to funerary design for that period, through such features as the overall plan, landscaping, statuary, sculpture, fencing, buildings, and grave markers.

### Not Eligible

- A cemetery cannot be eligible for design values if it no longer conveys its historic appearance because of the introduction of new grave markers.

## ELIGIBILITY FOR ASSOCIATION WITH EVENTS

Cemeteries may be associated with historic events including specific important events or general events that illustrate broad patterns.

### Eligible

- A cemetery associated with an important Civil War battle is eligible.
- A cemetery associated with the settlement of an area by an ethnic or cultural group is eligible if the movement of the group into the area had an important impact, if other properties associated with that group are rare, and if few documentary sources have survived to provide information about the group's history.

### Not Eligible

- A cemetery associated with a battle in the Civil War does not qualify if the battle was not important in the history of the war.
- A cemetery associated with an area's settlement by an ethnic or cultural group is not eligible if the impact of the group on the area cannot be established, if other extant historic properties better convey association with the group, or if the information that the cemetery can impart is available in documentary sources.

## ELIGIBILITY FOR INFORMATION POTENTIAL

Cemeteries, both historic and prehistoric, can be eligible if they have the potential to yield important information. The information must be important within a specific context and the potential to yield information must be demonstrated.

A cemetery can qualify if it has potential to yield important information provided that the information it contains is not available in extant documentary evidence.

### Eligible

- A cemetery associated with the settlement of a particular cultural group will qualify if it has the potential to yield important information about subjects such as demography, variations in mortuary practices, or the study of the cause of death correlated with nutrition or other variables.

## INTEGRITY

Assessing the integrity of a historic cemetery entails evaluating principal design features such as plan, grave markers, and any related elements (such as fencing). Only that portion of a historic cemetery that retains its historic integrity can be eligible. If the overall integrity has been lost because of the number and size of recent grave markers, some features such as buildings, structures, or objects that retain integrity may be considered as individual properties if they are of such historic or artistic importance that they individually meet one or more of the requirements listed above.

## NATIONAL CEMETERIES

National Cemeteries administered by the Veterans Administration are eligible because they have been designated by Congress as primary memorials to the military history of the United States. Those areas within a designated national cemetery that have been used or prepared for the reception of the remains of veterans and their dependents, as well as any landscaped areas that immediately surround the graves may qualify. Because these cemeteries draw their significance from the presence of the remains of military personnel who have served the country throughout

its history, the age of the cemetery is not a factor in judging eligibility, although integrity must be present.

A national cemetery or a portion of a national cemetery that has only been set aside for use in the future is not eligible.

---

# CRITERIA CONSIDERATION E: RECONSTRUCTED PROPERTIES

A reconstructed property is eligible when it is accurately executed in a suitable environment *and* presented in a dignified manner as part of a restoration master plan *and* when no other building or structure with the same associations has survived. All three of these requirements must be met.

---

## UNDERSTANDING CRITERIA CONSIDERATION E: RECONSTRUCTED PROPERTIES

“Reconstruction” is defined as the reproduction of the exact form and detail of a vanished building, structure, object, or a part thereof, as it appeared at a specific period of time. Reconstructed buildings fall into two categories: buildings wholly constructed of new materials and buildings reassembled from some historic and some new materials. Both categories of properties present problems in meeting the integrity requirements of the National Register criteria.

### *Examples of Properties that MUST Meet Criteria Consideration E: Reconstructed Properties*

- A property in which most or all of the fabric is not original.
- A district in which an important resource or a significant number of resources are reconstructions.

### *Examples of Properties that DO NOT Need to Meet Criteria Consideration E: Reconstructed Properties*

- A property that is remodeled or renovated and still has the majority of its original fabric.

## APPLYING CRITERIA CONSIDERATION E: RECONSTRUCTED PROPERTIES

### ACCURACY OF THE RECONSTRUCTION

The phrase “accurately executed” means that the reconstruction must be based upon sound archeological, architectural, and historic data concerning the historic construction and appearance of the resource. That documentation should include both analysis of any above or below ground material and research in written and other records.

## SUITABLE ENVIRONMENT

The phrase “suitable environment” refers to: 1) the physical context provided by the historic district and 2) any interpretive scheme, if the historic district is used for interpretive purposes. This means that the reconstructed property must be located at the same site as the original. It must also be situated in its original grouping of buildings, structures, and objects (as many as are extant), and that grouping must retain integrity. In addition, the reconstruction must not be misrepresented as an authentic historic property.

### Eligible

- A reconstructed plantation manager’s office building is considered eligible because it is located at its historic site, grouped with the remaining historic plantation buildings and structures, and the plantation as a whole retains integrity. Interpretation of the plantation district includes an explanation that the manager’s office is not the original building, but a reconstruction.

### Not Eligible

- The same reconstructed plantation manager’s office building would not qualify if it were rebuilt at a location different from that of the original building, or if the district as a whole no longer reflected the period for which it is significant, or if a misleading interpretive scheme were used for the district or for the reconstruction itself.

## RESTORATION MASTER PLANS

Being presented "as part of a restoration master plan" means that: 1) a reconstructed property is an essential component in a historic district and 2) the reconstruction is part of an overall restoration plan for an entire district. "Restoration" is defined as accurately recovering the form and details of a property and its setting as it appeared at a particular period by removing later work or by replacing missing earlier work (as opposed to completely rebuilding the property). The master plan for the entire property must emphasize restoration, not reconstruction. In other words, the master plan for the entire resource would not be acceptable under this consideration if it called for reconstruction of a majority of the resource.

### Eligible

- A reconstructed plantation manager's office is eligible if the office were an important component of the plantation *and* if the reconstruction is one element in an overall plan for restoring the plantation *and* if no other building or structure with the same associations has survived.
- The reconstruction of the plantation manager's office building can be eligible only if the majority of buildings, structures, and objects that comprised the plantation are extant and are being restored. For guidance regarding restoration see the *Secretary of the Interior's Standards for Historic Preservation Projects*.

## LAST SURVIVING PROPERTY OF A TYPE

This consideration also stipulates that a reconstruction can qualify if, in addition to the other requirements, no other building, object, or structure with the same association has survived. A reconstruction that is part of a restoration master plan is appropriate only if: 1) the property is the only one in the district with which a particular important activity or event has been historically associated or 2) no other property with the same associative values has survived.

## RECONSTRUCTIONS OLDER THAN FIFTY YEARS

After the passage of fifty years, a reconstruction may attain its own significance for what it reveals about the period in which it was built, rather than the historic period it was intended to depict. On that basis, a reconstruction can possibly qualify under any of the Criteria.



---

# CRITERIA CONSIDERATION F: COMMEMORATIVE PROPERTIES

A property primarily commemorative in intent can be eligible if design, age, tradition, or symbolic value has invested it with its own historical significance.

---

## UNDERSTANDING CRITERIA CONSIDERATION F: COMMEMORATIVE PROPERTIES

Commemorative properties are designed or constructed after the occurrence of an important historic event or after the life of an important person. They are not directly associated with the event or with the person's productive life, but serve as evidence of a later generation's assessment of the past. Their significance comes from their value as cultural expressions at the date of their creation. Therefore, a commemorative property generally must be over fifty years old and must possess significance based on its own value, not on the value of the event or person being memorialized.

### *Examples of Properties that MUST Meet Criteria Consideration F: Commemorative Properties*

- *A property whose sole or primary function is commemorative or in which the commemorative function is of primary significance.*

### *Examples of Properties that DO NOT Need to Meet Criteria Consideration F: Commemorative Properties*

- *A resource that has a non-commemorative primary function or significance.*
- *A single marker that is a component of a district (whether contributing or non-contributing).*

## APPLYING CRITERIA CONSIDERATION F: COMMEMORATIVE PROPERTIES

### ELIGIBILITY FOR DESIGN

A commemorative property derives its design from the aesthetic values of the period of its creation. A commemorative property, therefore, may be significant for the architectural, artistic, or other design qualities of its own period in prehistory or history.

#### Eligible

- A commemorative statue situated in a park or square is eligible if it expresses the aesthetics or craftsmanship of the period when it was made, meeting Criterion C.
- A late 19th century statue erected on a courthouse square to commemorate Civil War veterans would qualify if it reflects that era's shared perception of the noble character and valor of the veterans and their cause. This was commonly conveyed by portraying idealized soldiers or allegorical figures of battle, victory, or sacrifice.

## ELIGIBILITY FOR AGE, TRADITION, OR SYMBOLIC VALUE

A commemorative property cannot qualify for association with the event or person it memorializes. A commemorative property may, however, acquire significance after the time of its creation through *age*, *tradition*, or *symbolic* value. This significance must be documented by accepted methods of historical research, including written or oral history, and must meet one or more of the Criteria.

### Eligible

- A commemorative marker erected by a cultural group that believed the place was the site of its origins is eligible if, for subsequent generations of the group, the marker itself became the focus of traditional association with the group's historic identity.
- A building erected as a monument to an important historical figure will qualify if through the passage of time the property itself has come to symbolize the value placed upon the individual and is widely recognized as a reminder of enduring principles or contributions valued by the generation that erected the monument.
- A commemorative marker erected early in the settlement or development of an area will qualify if it is demonstrated that, because of its relative great age, the property has long been a part of the historic identity of the area.

### Not Eligible

- A commemorative marker erected in the past by a cultural group at the site of an event in its history would not be eligible if the marker were significant only for association with the event, and it had not become significant itself through tradition.
- A building erected as a monument to an important historical figure would not be eligible if its only value lay in its association with the individual, and it has not come to symbolize values, ideas, or contributions valued by the generation that erected the monument.
- A commemorative marker erected to memorialize an event in the community's history would not qualify simply for its association with the event it memorialized.

## INELIGIBILITY AS THE LAST REPRESENTATIVE OF AN EVENT OR PERSON

The loss of properties directly associated with a significant event or person does not strengthen the case for consideration of a commemorative property. Unlike birthplaces and graves, a commemorative property usually has no direct historic association. The commemorative property can qualify for historic association only if it is clearly significant in its own right, as stipulated above.

---

# CRITERIA CONSIDERATION G: PROPERTIES THAT HAVE ACHIEVED SIGNIFICANCE WITHIN THE LAST FIFTY YEARS<sup>9</sup>

A property achieving significance within the last fifty years is eligible if it is of exceptional importance.

---

## UNDERSTANDING CRITERIA CONSIDERATION G: PROPERTIES THAT HAVE ACHIEVED SIGNIFICANCE WITHIN THE LAST FIFTY YEARS

The National Register Criteria for Evaluation exclude properties that achieved significance within the last fifty years unless they are of exceptional importance. Fifty years is a general estimate of the time needed to develop historical perspective and to evaluate significance. This consideration guards against the listing of properties of passing contemporary interest and ensures that the National Register is a list of truly historic places.

### *Examples of Properties that MUST Meet Criteria Consideration G: Properties that Have Achieved Significance Within the Last Fifty Years*

- A property that is less than fifty years old.
- A property that continues to achieve significance into a period less than fifty years before the nomination.
- A property that has non-contiguous Periods of Significance, one of which is less than fifty years before the nomination.
- A property that is more than fifty years old and had no significance until a period less than fifty years before the nomination.

### *Examples of Properties that DO NOT Need to Meet Criteria Consideration G: Properties that Have Achieved Significance Within the Last Fifty Years*

- A resource whose construction began over fifty years ago, but the completion overlaps the fifty year period by a few years or less.
- A resource that is significant for its plan or design, which is over fifty years old, but the actual completion of the project overlaps the fifty year period by a few years.
- A historic district in which a few properties are newer than fifty years old, but the majority of properties and the most important Period of Significance are greater than fifty years old.

---

<sup>9</sup> For more information on Criteria Consideration G, refer to *National Register Bulletin: Guidelines for Evaluating and Nominating Properties that Have Achieved Significance Within the Last Fifty Years*.

# APPLYING CRITERIA CONSIDERATION G: PROPERTIES THAT HAVE ACHIEVED SIGNIFICANCE WITHIN THE PAST FIFTY YEARS

## ELIGIBILITY FOR EXCEPTIONAL IMPORTANCE

The phrase “exceptional importance” may be applied to the extraordinary importance of an event or to an entire category of resources so fragile that survivors of any age are unusual. Properties listed that had attained significance in less than fifty years include: the launch pad at Cape Canaveral from which men first traveled to the moon, the home of nationally prominent playwright Eugene O’Neill, and the Chrysler Building (New York) significant as the epitome of the “Style Moderne” architecture.

Properties less than fifty years old that qualify as exceptional because the entire category of resources is fragile include a recent example of a traditional sailing canoe in the Trust Territory of the Pacific Islands, where because of rapid deterioration of materials, no working Micronesian canoes exist that are more than twenty years old. Properties that by their nature can last more than fifty years cannot be considered exceptionally important because of the fragility of the class of resources.

The phrase “exceptional importance” does not require that the property be of national significance. It is a measure of a property’s importance within the appropriate historic context, whether the scale of that context is local, State, or national.

### Eligible

- The General Laundry Building in New Orleans, one of the few remaining Art Deco Style buildings in that city, was listed in the National Register when it was forty years old because of its exceptional importance as an example of that architectural style.

## HISTORICAL PERSPECTIVE

A property that has achieved significance within the past fifty years can be evaluated only when sufficient historical perspective exists to determine that the property is exceptionally important. The necessary perspective can be provided by scholarly research and evaluation, and must consider both the historic context and the specific property’s role in that context.

In many communities, properties such as apartment buildings built in the 1950s cannot be evaluated because there is no scholarly research available to provide an overview of the nature, role, and impact of that building type within the context of historical and architectural developments of the 1950s.

## NATIONAL PARK SERVICE RUSTIC ARCHITECTURE

Properties such as structures built in a rustic style by the National Park Service during the 1930s and 1940s can be evaluated because a broad study, *National Park Service Rustic Architecture* (1977), provides the context for evaluating properties of this type and style. Specific examples were listed in the National Register prior to reaching fifty years of age when documentation concerning the individual properties established their significance within the historical and architectural context of the type and style.

## VETERANS ADMINISTRATION HOSPITALS

Hospitals less than fifty years old that were constructed by the Veterans Bureau and Veterans Administration can be evaluated because the collection of forty-eight facilities built between 1920 and 1946 has been analyzed in a study prepared by the agency. The study provided a historic and architectural context for development of veteran’s care within which hospitals could be evaluated. The exceptional importance of specific individual facilities constructed within the past fifty years could therefore be determined based on their role and their present integrity.

## COMPARISON WITH RELATED PROPERTIES

In justifying exceptional importance, it is necessary to identify other properties within the geographical area that reflect the same significance or historic associations and to determine which properties *best* represent the historic context in question. Several properties in the area could become eligible with the passage of time, but few will qualify now as exceptionally important.

## POST-WORLD WAR II PROPERTIES

Properties associated with the post-World War II era must be identified and evaluated to determine which ones in an area could be judged exceptionally important. For example, a public housing complex may be eligible as an outstanding expression of the nation’s post-war urban policy. A military installation could be judged exceptionally important because of its contribution to the Cold War arms race. A church building in a Southern city may have served as the pivotal rallying point for the city’s most famous civil rights protest. A post-war suburban subdivision may be the best reflection of contemporary siting and design tenets in a metropolitan area. In each case, the nomination preparer must justify the *exceptional* importance of the property relative to similar properties in the community, State, or nation.

## ELIGIBILITY FOR INFORMATION POTENTIAL

A property that has achieved significance within the past fifty years can qualify under Criterion D only if it can be demonstrated that the information is of exceptional importance within the appropriate context and that the property contains data superior to or different from those obtainable from other sources, including other culturally related sites. An archeological site less than fifty years old may be eligible if the former inhabitants are so poorly documented that information about their lifeways is best obtained from examination of the material remains.

### Eligible

- Data such as the rate of adoption of modern technological innovations by rural tenant farmers in the 1950s may not be obtainable through interviews with living persons but could be gained by examination of homesites.

### Not Eligible

- A recent archeological site such as the remains of a Navajo sheep corral used in the 1950s would not be considered exceptionally significant for its information potential on animal husbandry if better information on the same topic is available through ethnographic studies or living informants.

## HISTORIC DISTRICTS

Properties which have achieved significance within the past fifty years can be eligible for the National Register if they are an integral part of a district which qualifies for National Register listing. This is demonstrated by documenting that the property dates from within the district's defined Period of Significance and that it is associated with one or more of the district's defined Areas of Significance.

Properties less than fifty years old may be an integral part of a district when there is sufficient perspective to consider the properties as historic. This is accomplished by demonstrating that: 1) the district's Period of Significance is justified as a discrete period with a defined beginning and end, 2) the character of the district's historic resources is clearly defined and assessed, 3) specific resources in the district are demonstrated to date from that discrete era, and 4) the majority of district properties are over fifty years old. In these instances, it is not necessary to prove exceptional importance of either the district itself or the less-than-fifty-year-old properties. Exceptional importance still must be demonstrated for district where the majority of properties or the major Period of Significance is less than fifty years old, and for less-than-fifty-year-old properties which are nominated individually.

## PROPERTIES MORE THAN FIFTY YEARS IN AGE, LESS THAN FIFTY YEARS IN SIGNIFICANCE

Properties that are more than fifty years old, but whose significant associations or qualities are less than fifty years old, must be treated under the fifty year consideration.

### Eligible

- A building constructed early in the twentieth century (and having no architectural importance), but that was associated with an important person during the 1950s, must be evaluated under Criteria Consideration G because the Period of Significance is within the past fifty years. Such a property would qualify if the person was of exceptional importance.

## REQUIREMENT TO MEET THE CRITERIA, REGARDLESS OF AGE

Properties that are less than fifty years old and are not exceptionally important will *not* automatically qualify for the National Register once they are fifty years old. In order to be listed in the National Register, all properties, regardless of age, must be demonstrated to meet the Criteria for Evaluation.

---

# VIII. HOW TO EVALUATE THE INTEGRITY OF A PROPERTY

---

## INTRODUCTION

Integrity is the ability of a property to convey its significance. To be listed in the National Register of Historic Places, a property must not only be shown to be significant under the National Register criteria, but it also must have integrity. The evaluation of integrity is sometimes a subjective judgment, but it must always be grounded in an understanding of a property's physical features and how they relate to its significance.

Historic properties either retain integrity (this is, convey their significance) or they do not. Within the concept of integrity, the National Register criteria recognizes seven aspects or qualities that, in various combinations, define integrity.

To retain historic integrity a property will always possess several, and usually most, of the aspects. The retention of specific aspects of integrity is paramount for a property to convey its significance. Determining *which* of these aspects are most important to a particular property requires knowing why, where, and when the property is significant. The following sections define the seven aspects and explain how they combine to produce integrity.

## SEVEN ASPECTS OF INTEGRITY

- Location
- Design
- Setting
- Materials
- Workmanship
- Feeling
- Association

## UNDERSTANDING THE ASPECTS OF INTEGRITY

### LOCATION

**Location is the place where the historic property was constructed or the place where the historic event occurred.** The relationship between the property and its location is often important to understanding why the property was created or why something happened. The actual location of a historic property, complemented by its setting, is particularly important in recapturing the sense of historic events and persons. Except in rare cases, the relationship between a property and its historic associations is destroyed if the property is moved. (See Criteria Consideration B in *Part VII: How to Apply the Criteria Considerations*, for the conditions under which a moved property can be eligible.)

## DESIGN

**Design is the combination of elements that create the form, plan, space, structure, and style of a property.** It results from conscious decisions made during the original conception and planning of a property (or its significant alteration) and applies to activities as diverse as community planning, engineering, architecture, and landscape architecture. Design includes such elements as organization of space, proportion, scale, technology, ornamentation, and materials.

A property's design reflects historic functions and technologies as well as aesthetics. It includes such considerations as the structural system; massing; arrangement of spaces; pattern of fenestration; textures and colors of surface materials; type, amount, and style of ornamental detailing; and arrangement and type of plantings in a designed landscape.

Design can also apply to districts, whether they are important primarily for historic association, architectural value, information potential, or a combination thereof. For districts significant primarily for historic association or architectural value, design concerns more than just the individual buildings or structures located within the boundaries. It also applies to the way in which buildings, sites, or structures are related: for example, spatial relationships between major features; visual rhythms in a streetscape or landscape plantings; the layout and materials of walkways and roads; and the relationship of other features, such as statues, water fountains, and archeological sites.

## SETTING

**Setting is the physical environment of a historic property.** Whereas location refers to the specific place where a property was built or an event occurred, setting refers to the *character* of the place in which the property played its historical role. It involves *how*, not just *where*, the property is situated and its relationship to surrounding features and open space.

Setting often reflects the basic physical conditions under which a property was built and the functions it was intended to serve. In addition, the way in which a property is positioned in its environment can reflect the designer's concept of nature and aesthetic preferences.

The physical features that constitute the setting of a historic property can be either natural or manmade, including such elements as:

- Topographic features (a gorge or the crest of a hill);
- Vegetation;
- Simple manmade features (paths or fences); and
- Relationships between buildings and other features or open space.

These features and their relationships should be examined not only within the exact boundaries of the property, but also between the property and its *surroundings*. This is particularly important for districts.

## MATERIALS

**Materials are the physical elements that were combined or deposited during a particular period of time and in a particular pattern or configuration to form a historic property.** The choice and combination of materials reveal the preferences of those who created the property and indicate the availability of particular types of materials and technologies. Indigenous materials are often the focus of regional building traditions and thereby help define an area's sense of time and place.

A property must retain the key exterior materials dating from the period of its historic significance. If the property has been rehabilitated, the historic materials and significant features must have been preserved. The property must also be an actual historic resource, not a recreation; a

recent structure fabricated to look historic is not eligible. Likewise, a property whose historic features and materials have been lost and then reconstructed is usually not eligible. (See Criteria Consideration E in *Part VII: How to Apply the Criteria Considerations* for the conditions under which a reconstructed property can be eligible.)

## WORKMANSHIP

**Workmanship is the physical evidence of the crafts of a particular culture or people during any given period in history or prehistory.** It is the evidence of artisans' labor and skill in constructing or altering a building, structure, object, or site. Workmanship can apply to the property as a whole or to its individual components. It can be expressed in vernacular methods of construction and plain finishes or in highly sophisticated configurations and ornamental detailing. It can be based on common traditions or innovative period techniques.

Workmanship is important because it can furnish evidence of the technology of a craft, illustrate the aesthetic principles of a historic or prehistoric period, and reveal individual, local, regional, or national applications of both technological practices and aesthetic principles. Examples of workmanship in historic buildings include tooling, carving, painting, graining, turning, and joinery. Examples of workmanship in prehistoric contexts include Paleo-Indian clovis projectile points; Archaic period beveled adzes; Hopewellian birdstone pipes; copper earspools and worked bone pendants; and Iroquoian effigy pipes.

## FEELING

**Feeling is a property's expression of the aesthetic or historic sense of a particular period of time.** It results from the presence of physical features that, taken together, convey the property's historic character. For example, a rural historic district retaining original design, materials, workmanship, and setting will relate the feeling of agricultural life in the 19th century. A grouping of prehistoric petroglyphs, unmarred by graffiti and intrusions and located on its original isolated bluff, can evoke a sense of tribal spiritual life.

## ASSOCIATION

**Association is the direct link between an important historic event or person and a historic property.** A property retains association if it is the place where the event or activity occurred and is sufficiently intact to convey that relationship to an observer. Like feeling, association requires the presence of physical features that convey a property's historic character. For example, a Revolutionary War battlefield whose natural and manmade elements have remained intact since the 18th century will retain its quality of association with the battle.

Because feeling and association depend on individual perceptions, their retention *alone* is never sufficient to support eligibility of a property for the National Register.

## ASSESSING INTEGRITY IN PROPERTIES

Integrity is based on significance: why, where, and when a property is important. Only after significance is fully established can you proceed to the issue of integrity.

The steps in assessing integrity are:

- Define the **essential physical features** that must be present for a property to represent its significance.
- Determine whether the **essential physical features are visible** enough to convey their significance.
- Determine whether the property needs to be **compared with similar properties**. And,
- Determine, based on the significance and essential physical features, **which aspects of integrity** are particularly vital to the property being nominated and if they are present.

Ultimately, the question of integrity is answered by whether or not the property retains the **identity** for which it is significant.

## DEFINING THE ESSENTIAL PHYSICAL FEATURES

All properties change over time. It is not necessary for a property to retain all its historic physical features or characteristics. The property must retain, however, the essential physical features that enable it to convey its historic identity. The essential physical features are those features that define both *why* a property is significant (Applicable Criteria and Areas of Significance) and *when* it was significant (Periods of Significance). They are the features without which a property can no longer be identified as, for instance, a late 19th century dairy barn or an early 20th century commercial district.

### CRITERIA A AND B

A property that is significant for its historic association is eligible if it retains the essential physical features that made up its character or appearance during the period of its association with the important event, historical pattern, or person(s). If the property is a site (such as a treaty site) where there are no material cultural remains, the setting must be intact.

Archeological sites eligible under Criteria A and B must be in overall good condition with excellent preservation of features, artifacts, and spatial relationships to the extent that these remains are able to convey important associations with events or persons.

### CRITERION C

A property important for illustrating a particular architectural style or construction technique must retain most of the physical features that constitute that style or technique. A property that has lost some historic materials or details can be eligible if it retains the majority of the features that illustrate its style in terms of the massing, spatial relationships, proportion, pattern of windows and doors, texture of materials, and ornamentation. The property is not eligible, however, if it retains some basic features conveying massing but has lost the majority of the features that once characterized its style.

Archeological sites eligible under Criterion C must be in overall good condition with excellent preservation

of features, artifacts, and spatial relationships to the extent that these remains are able to illustrate a site type, time period, method of construction, or work of a master.

### CRITERION D

For properties eligible under Criterion D, including archeological sites and standing structures studied for their information potential, less attention is given to their overall condition, than it they were being considered under Criteria A, B, or C. Archeological sites, in particular, do not exist today exactly as they were formed. There are always cultural and natural processes that alter the deposited materials and their spatial relationships.

For properties eligible under Criterion D, integrity is based upon the property's potential to yield specific data that addresses important research questions, such as those identified in the historic context documentation in the Statewide Comprehensive Preservation Plan or in the research design for projects meeting the *Secretary of the Interior's Standards for Archeological Documentation*.

### INTERIORS

Some historic buildings are virtually defined by their exteriors, and their contribution to the built environment can be appreciated even if their interiors are not accessible. Examples of this would include early examples of steel-framed skyscraper construction. The great advance in American technology and engineering made by these buildings can be read from the outside. The change in American popular taste during the 19th century, from the symmetry and simplicity of architectural styles based on classical precedents, to the expressions of High Victorian styles, with their combination of textures, colors, and asymmetrical forms, is readily apparent from the exteriors of these buildings.

Other buildings "are" interiors. The Cleveland Arcade, that soaring 19th century glass-covered shopping area, can only be appreciated from the inside. Other buildings in this category would be the great covered train sheds of the 19th century.

In some cases the loss of an interior will disqualify properties from listing

in the National Register—a historic concert hall noted for the beauty of its auditorium and its fine acoustic qualities would be the type of property that if it were to lose its interior, it would lose its value as a historic resource. In other cases, the overarching significance of a property's exterior can overcome the adverse effect of the loss of an interior.

In borderline cases particular attention is paid to the significance of the property and the remaining historic features.

### HISTORIC DISTRICTS

For a district to retain integrity as a whole, the majority of the components that make up the district's historic character must possess integrity even if they are individually undistinguished. In addition, the relationships among the district's components must be substantially unchanged since the period of significance.

When evaluating the impact of intrusions upon the district's integrity, take into consideration the relative number, size, scale, design, and location of the components that do not contribute to the significance. A district is not eligible if it contains so many alterations or new intrusions that it no longer conveys the sense of a historic environment.

A component of a district cannot contribute to the significance if:

- it has been substantially altered since the period of the district's significance *or*
- it does not share the historic associations of the district.

### VISIBILITY OF PHYSICAL FEATURES

Properties eligible under Criteria A, B, and C must not only retain their essential physical features, but the features must be visible enough to convey their significance. This means that even if a property is physically intact, its integrity is questionable if its significant features are concealed under modern construction. Archeological properties are often the exception to this; by nature they usually do not require visible features to convey their significance.



## NON-HISTORIC EXTERIORS

If the historic *exterior* building material is covered by non-historic material (such as modern siding), the property can still be eligible if the significant form, features, and detailing are not obscured. If a property's exterior is covered by a non-historic false-front or curtain wall, the property will not qualify under Criteria A, B, or C, because it does not retain the visual quality necessary to convey historic or architectural significance. Such a property also cannot be considered a contributing element in a historic district, because it does not add to the district's sense of time and place. If the false front, curtain wall, or non-historic siding is removed and the original building materials are intact, then the property's integrity can be re-evaluated.

## PROPERTY CONTAINED WITHIN ANOTHER PROPERTY

Some properties contain an earlier structure that formed the nucleus for later construction. The exterior property, if not eligible in its own right, can qualify on the basis of the interior property *only if* the interior property can yield significant information about a specific construction technique or material, such as rammed earth or tabby. The interior property *cannot* be used as the basis for eligibility if it has been so altered that it no longer contains the features that could provide important information, or if the presence of important information cannot be demonstrated.

## SUNKEN VESSELS

A sunken vessel can be eligible under Criterion C as embodying the distinctive characteristics of a method of construction if it is structurally intact. A *deteriorated* sunken vessel, no longer structurally intact, can be eligible under Criterion D if the remains of either the vessel or its contents is capable of yielding significant information. For further information, refer to *National Register Bulletin: Nominating Historic Vessels and Shipwrecks to the National Register of Historic Places*.

### Natural Features

A natural feature that is associated with a historic event or trend, such as a rock formation that served as a trail marker during westward expansion, must retain its historic appearance, unobscured by modern construction or landfill. Otherwise it is not eligible, even though it remains intact.

## COMPARING SIMILAR PROPERTIES

For some properties, comparison with similar properties should be considered during the evaluation of integrity. Such comparison may be important in deciding what physical features are essential to properties of that type. In instances where it has not been determined what physical features a property must possess in order for it to reflect the significance of a historic context, comparison with similar properties should be undertaken during the evaluation of integrity. This situation arises when scholarly work has not been done on a particular property type or when surviving examples of a property type are extremely rare. (See **Comparing Related Properties** in *Part V: How to Evaluate a Property within its Historic Context*.)

## RARE EXAMPLES OF A PROPERTY TYPE

Comparative information is particularly important to consider when evaluating the integrity of a property that is a rare surviving example of its type. The property must have the essential physical features that enable it to convey its historic character or information. The rarity and poor condition, however, of other extant examples of the type may justify accepting a greater degree of alteration or fewer features, provided that enough of the property survives for it to be a significant resource.

### Eligible

- A one-room schoolhouse that has had all original exterior siding replaced and a replacement roof that does not exactly replicate the original roof profile can be eligible if the other extant rare examples have received an even greater degree of alteration, such as the subdivision of the original one-room plan.

### Not Eligible

- A mill site contains information on how site patterning reflects historic functional requirements, but parts of the site have been destroyed. The site is not eligible for its information potential if a comparison of other mill sites reveals more intact properties with complete information.

## DETERMINING THE RELEVANT ASPECTS OF INTEGRITY

Each type of property depends on certain aspects of integrity, more than others, to express its historic significance. Determining which of the aspects is most important to a particular property requires an understanding of the property's significance and its essential physical features.

### CRITERIA A AND B

A property important for association with an event, historical pattern, or person(s) ideally might retain *some* features of all seven aspects of integrity: location, design, setting, materials, workmanship, feeling, and association. Integrity of design and workmanship, however, might not be as important to the significance, and would not be relevant if the property were a site. A basic integrity test for a property associated with an important event or person is whether a historical contemporary would recognize the property as it exists today.

For archeological sites that are eligible under Criteria A and B, the seven aspects of integrity can be applied in much the same way as they are to buildings, structures, or objects. It is important to note, however, that the site must have *demonstrated* its ability to convey its significance, as opposed to sites eligible under Criterion D where only the potential to yield information is required.

#### Eligible

A mid-19th century waterpowered mill important for its association with an area's industrial development is eligible if:

- it is still on its original site (**Location**), and
- the important features of its setting are intact (**Setting**), and
- it retains most of its historic materials (**Materials**), and
- it has the basic features expressive of its design and function, such as configuration, proportions, and window pattern (**Design**).

#### Not Eligible

A mid-19th century water-powered mill important for its association with an area's industrial development is not eligible if:

- it has been moved (**Location, Setting, Feeling, and Association**), or
- substantial amounts of new materials have been incorporated (**Materials, Workmanship, and Feeling**), or
- it no longer retains basic design features that convey its historic appearance or function (**Design, Workmanship, and Feeling**).

### CRITERION C

A property significant under Criterion C must retain those physical features that characterize the type, period, or method of construction that the property represents. Retention of design, workmanship, and materials will usually be more important than location, setting, feeling, and association. Location and setting will be important, however, for those properties whose design is a reflection of their immediate environment (such as designed landscapes and bridges).

For archeological sites that are eligible under Criterion C, the seven aspects of integrity can be applied in much the same way as they are to buildings, structures, or objects. It is important to note, however, that the site must have *demonstrated* its ability to convey its significance, as opposed to sites eligible under Criterion D where only the *potential* to yield information is required.

#### Eligible

A 19th century wooden covered bridge, important for illustrating a construction type, is eligible if:

- the essential features of its design are intact, such as abutments, piers, roof configuration, and trusses (**Design, Workmanship, and Feeling**), and
- most of the historic materials are present (**Materials, Workmanship, and Feeling**), and
- evidence of the craft of wooden bridge technology remains, such as the form and assembly technique of the trusses (**Workmanship**).
- Since the design of a bridge relates directly to its function as a transportation crossing, it is also important that the bridge still be situated over a waterway (**Setting, Location, Feeling, and Association**).

#### Not Eligible

For a 19th century wooden covered bridge, important for its construction type, replacement of some materials of the flooring, siding, and roofing would not necessarily damage its integrity. Integrity would be lost, however, if:

- the abutments, piers, or trusses were substantially altered (**Design, Workmanship, and Feeling**) or
- considerable amounts of new materials were incorporated (**Materials, Workmanship, and Feeling**).
- Because environment is a strong factor in the design of this property type, the bridge would also be ineligible if it no longer stood in a place that conveyed its function as a crossing (**Setting, Location, Feeling, and Association**).

## CRITERION D

For properties eligible under Criterion D, setting and feeling may not have direct bearing on the property's ability to yield important information. Evaluation of integrity probably will focus primarily on the location, design, materials, and perhaps workmanship.

### Eligible

A multicomponent prehistoric site important for yielding data on changing subsistence patterns can be eligible if:

- floral or faunal remains are found in clear association with cultural material (**Materials** and **Association**) and
- the site exhibits stratigraphic separation of cultural components (**Location**).

### Not Eligible

A multicomponent prehistoric site important for yielding data on changing subsistence patterns would not be eligible if:

- floral or faunal remains were so badly decomposed as to make identification impossible (**Materials**), or
- floral or faunal remains were disturbed in such a manner as to make their association with cultural remains ambiguous (**Association**), or
- the site has lost its stratigraphic context due to subsequent land alterations (**Location**).

### Eligible

A lithic scatter site important for yielding data on lithic technology during the Late Archaic period can be eligible if:

- the site contains lithic debitage, finished stone tools, hammerstones, or antler flakers (**Material** and **Design**), and
- the site contains datable material (**Association**).

### Not Eligible

A lithic scatter site important for yielding data on lithic technology during the Late Archaic period would not be eligible if:

- the site contains natural deposits of lithic materials that are impossible to distinguish from culturally modified lithic material (**Design**) or
- the site does not contain any temporal diagnostic evidence that could link the site to the Late Archaic period (**Association**).

---

# IX. SUMMARY OF THE NATIONAL HISTORIC LANDMARKS CRITERIA FOR EVALUATION

---

A property being nominated to the National Register may also merit consideration for potential designation as a National Historic Landmark. Such consideration is dependent upon the stringent application of the following distinct set of criteria (found in the *Code of Federal Regulations, Title 36, Part 65*).

## NATIONAL HISTORIC LANDMARKS CRITERIA

The quality of national significance is ascribed to districts, sites, buildings, structures, and objects that possess exceptional value or quality in illustrating or interpreting the heritage of the United States in history, architecture, archeology, engineering, and culture and that possess a high degree of integrity of location, design, setting, materials, workmanship, feeling, and association, and:

1. That are associated with events that have made a significant contribution to, and are identified with, or that outstandingly represent, the broad national patterns of United States history and from which an understanding and appreciation of those patterns may be gained; or
2. That are associated importantly with the lives of persons nationally significant in the history of the United States; or

3. That represent some great idea or ideal of the American people; or
4. That embody the distinguishing characteristics of an architectural type specimen exceptionally valuable for a study of a period, style or method of construction, or that represent a significant, distinctive and exceptional entity whose components may lack individual distinction; or
5. That are composed of integral parts of the environment not sufficiently significant by reason of historical association or artistic merit to warrant individual recognition but collectively compose an entity of exceptional historical or artistic significance, or outstandingly commemorate or illustrate a way of life or culture; or
6. That have yielded or may be likely to yield information of major scientific importance by revealing new cultures, or by shedding light upon periods of occupation over large areas of the United States. Such sites are those which have yielded, or which may reasonably be expected to yield, data affecting theories, concepts and ideas to a major degree.

## NATIONAL HISTORIC LANDMARK EXCLUSIONS

Ordinarily, cemeteries, birthplaces, graves of historical figures, properties owned by religious institutions or used for religious purposes, structures that have been moved from their original locations, reconstructed historic buildings and properties that have achieved significance within the past fifty years are not eligible for designation. If such properties fall within the following categories they may, nevertheless, be found to qualify:

1. A religious property deriving its primary national significance from architectural or artistic distinction or historical importance; or
2. A building or structure removed from its original location but which is nationally significant primarily for its architectural merit, or for association with persons or events of transcendent importance in the nation's history and the association consequential; or
3. A site of a building or structure no longer standing but the person or event associated with it is of transcendent importance in the nation's history and the association consequential; or

4. A birthplace, grave or burial if it is of a historical figure of transcendent national significance and no other appropriate site, building, or structure directly associated with the productive life of that person exists; or
5. A cemetery that derives its primary national significance from graves of persons of transcendent importance, or from an exceptionally distinctive design or an exceptionally significant event; or
6. A reconstructed building or ensemble of buildings of extraordinary national significance when accurately executed in a suitable environment and presented in a dignified manner as part of a restoration master plan, and when no other buildings or structures with the same association have survived; or
7. A property primarily commemorative in intent if design, age, tradition, or symbolic value has invested it with its own national historical significance; or
8. A property achieving national significance within the past 50 years if it is of extraordinary national importance.

## COMPARING THE NATIONAL HISTORIC LANDMARKS CRITERIA AND THE NATIONAL REGISTER CRITERIA

In general, the instructions for preparing a National Register nomination and the guidelines stated in this bulletin for applying the National Register Criteria also apply to Landmark nominations and the use of the Landmark criteria. While there are specific distinctions discussed below, *Parts IV and V* of this bulletin apply equally to National Register listings and Landmark nominations. That is, the categories of historic properties are defined the same way; historic con-

texts are identified similarly; and comparative evaluation is carried out on the same principles enumerated in *Part V*.

There are some differences between National Register and National Historic Landmarks Criteria. The following is an explanation of how each Landmark Criterion compares with its National Register Criteria counterpart:

### CRITERION 1

This Criterion relates to National Register Criterion A. Both cover properties associated with events. The Landmark Criterion, however, requires that the events associated with the property be *outstandingly* represented by that property and that the property be related to the broad national patterns of U.S. history. Thus, the quality of the property to convey and interpret its meaning must be of a higher order and must relate to national themes rather than the narrower context of State or local themes.

### CRITERION 2

This Criterion relates to National Register Criterion B. Both cover properties associated with significant people. The Landmark Criterion differs in that it specifies that the association of a person to the property in question be an important one and that the person associated with the property be of *national* significance.

### CRITERION 3

This Criterion has no counterpart among the National Register Criteria. It is rarely, if ever, used alone. While not a landmark at present, the Liberty Bell is an object that might be considered under this Criterion. The application of this Criterion obviously requires the most careful scrutiny and would apply only in rare instances involving ideas and ideals of the highest order.

### CRITERION 4

This Criterion relates to National Register Criterion C. Its intent is to qualify exceptionally important works of architecture or collective elements of architecture extraordinarily significant as an ensemble, such as a historic

district. Note that the language is more restrictive than that of the National Register Criterion in requiring that a candidate in architecture be "a specimen exceptionally valuable for the study of a period, style, or method of construction" rather than simply embodying distinctive characteristics of a type, period, or method of construction. With regard to historic districts, the Landmarks Criterion requires an entity that is distinctive and exceptional. Unlike National Register Criterion C, this Criterion will not qualify the works of a master, *per se*, but only such works which are exceptional or extraordinary. Artistic value is considered only in the context of history's judgement in order to avoid current conflicts of taste.

### CRITERION 5

This Criterion does not have a strict counterpart among the National Register Criteria. It may seem redundant of the latter part of Landmark Criterion 4. It is meant to cover collective entities such as Greenfield Village and historic districts like New Bedford, Massachusetts, which qualify for their collective association with a nationally significant event, movement, or broad pattern of national development.

### CRITERION 6

The National Register counterpart of this is Criterion D. Criterion 6 was developed specifically to recognize archeological sites. All such sites must address this Criterion. The following are the qualifications that distinguish this Criterion from its National Register counterpart: the information yielded or likely to be yielded must be of *major* scientific importance by revealing new cultures, or by shedding light upon periods of occupation *over large areas* of the United States. Such sites should be expected to yield data affecting *theories, concepts, and ideas* to a *major degree*.

The data recovered or expected to be recovered must make a major contribution to the existing corpus of information. Potentially recoverable data must be likely to revolutionize or substantially modify a major theme in history or prehistory, resolve a substantial historical or anthropological debate, or close a serious gap in a major theme of U. S. history or prehistory.

# EXCLUSIONS AND EXCEPTIONS TO THE EXCLUSIONS

This section of the National Historic Landmarks Criteria has its counterpart in the National Register's "Criteria Considerations." The most abundant difference between them is the addition of the qualifiers "national," "exceptional," or "extraordinary" before the word significance. Other than this, the following are the most notable distinctions:

## EXCLUSION 2

Buildings moved from their original location, qualify only if one of two conditions are met: 1) the building is nationally significant for

architecture, or 2) the persons or events with which they are associated are of *transcendent* national significance and the association is consequential.

Transcendent significance means an order of importance higher than that which would ordinarily qualify a person or event to be nationally significant. A consequential association is a relationship to a building that had an evident impact on events, rather than a connection that was incidental and passing.

## EXCLUSION 3

This pertains to the site of a structure no longer standing. There is no counterpart to this exclusion in the National Register Criteria. In order for such a property to qualify for Landmark designation it must meet the second condition cited for Exclusion 2.

## EXCLUSION 4

This exclusion relates to Criteria Consideration C of the National Register Criteria. The only difference is that a burial place qualifies for Landmark designation only if, in addition to other factors, the person buried is of *transcendent* national importance.

When evaluating properties at the national level for designation as a National Historic Landmark, please refer to the National Historic Landmarks outline, *History and Prehistory in the National Park System and the National Historic Landmarks Program, 1987*. (For more information about the National Historic Landmarks program, please write to Department of the Interior, National Park Service, National Historic Landmarks, 1849 C Street, NW, NC400, Washington, DC 20240.)

---

# X. GLOSSARY

---

**Associative Qualities** - An aspect of a property's history that links it with historic events, activities, or persons.

**Code of Federal Regulations** - Commonly referred to as "CFR." The part containing the National Register Criteria is usually referred to as 36 CFR 60, and is available from the National Park Service.

**CLG** - Certified Local Government.

**Culture** - A group of people linked together by shared values, beliefs, and historical associations, together with the group's social institutions and physical objects necessary to the operation of the institution.

**Cultural Resource** - See Historic Resource.

**Evaluation** - Process by which the significance and integrity of a historic property are judged and eligibility for National Register listing is determined.

**Historic Context** - An organizing structure for interpreting history that groups information about historic properties that share a common theme, common geographical area, and a common time period. The development of historic contexts is a foundation for decisions about the planning, identification, evaluation, registration, and treatment of historic properties, based upon comparative historic significance.

**Historic Integrity** - The unimpaired ability of a property to convey its historical significance.

**Historic Property** - See Historic Resource.

**Historic Resource** - Building, site, district, object, or structure evaluated as historically significant.

**Identification** - Process through which information is gathered about historic properties.

**Listing** - The formal entry of a property in the National Register of Historic Places. See also, Registration.

**Nomination** - Official recommendation for listing a property in the National Register of Historic Places.

**Property Type** - A grouping of properties defined by common physical and associative attributes.

**Registration** - Process by which a historic property is documented and nominated or determined eligible for listing in the National Register.

**Research Design** - A statement of proposed identification, documentation, investigation, or other treatment of a historic property that identifies the project's goals, methods and techniques, expected results, and the relationship of the expected results to other proposed activities or treatments.

---

# XI. LIST OF NATIONAL REGISTER BULLETINS

---

## The Basics

How to Apply National Register Criteria for Evaluation \*

Guidelines for Completing National Register of Historic Places Form

Part A: How to Complete the National Register Form \*

Part B: How to Complete the National Register Multiple Property Documentation Form \*

Researching a Historic Property \*

## Property Types

Guidelines for Evaluating and Documenting Historic **Aids to Navigation** \*

Guidelines for Identifying, Evaluating and Registering **America's Historic Battlefields**

Guidelines for Evaluating and Registering Historical **Archeological Sites**

Guidelines for Evaluating and Documenting Historic **Aviation Properties**

Guidelines for Evaluating and Registering **Cemeteries and Burial Places**

How to Evaluate and Nominate **Designed Historic Landscapes** \*

Guidelines for Identifying, Evaluating and Registering Historic **Mining Sites**

How to Apply National Register Criteria to **Post Offices** \*

Guidelines for Evaluating and Documenting **Properties Associated with Significant Persons**

Guidelines for Evaluating and Documenting **Properties That Have Achieved Significance Within the Last Fifty Years** \*

Guidelines for Evaluating and Documenting **Rural Historic Landscapes** \*

Guidelines for Evaluating and Documenting **Traditional Cultural Properties** \*

Nominating Historic **Vessels and Shipwrecks** to the National Register of Historic Places

## Technical Assistance

Defining Boundaries for National Register Properties\*

Guidelines for Local Surveys: A Basis for Preservation Planning \*

How to Improve the Quality of Photographs for National Register Nominations

National Register Casebook: Examples of Documentation \*

Using the UTM Grid System to Record Historic Sites

To order these publications, write to: National Register of Historic Places, National Park Service, 1849 C St., NC 400, NW, Washington, D.C. 20240, or e-mail at: [nr\\_reference@nps.gov](mailto:nr_reference@nps.gov). Publications marked with an asterisk (\*) are also available in electronic form at [www.cr.nps.gov/nr](http://www.cr.nps.gov/nr).